



The results of your scan will go to your Doctor on the computer

This will take 7 – 10 days.



If you have any questions please call the X-ray Department

Telephone:  
01851 708224

We are open:  
Mon-Fri  
8:30-5:00

## We are listening - how did we do?

We welcome your feedback. If you would like to tell us about your experience:



Speak to a member of staff.



visit our website at:  
[www.wihb.scot.nhs.uk/feedback](http://www.wihb.scot.nhs.uk/feedback)  
or share your story at:  
[www.careopinion.org.uk](http://www.careopinion.org.uk)  
or tel. 0800 122 31 35.



Tel. 01851 704704 (ask for extension 2408) on Tuesday or Friday afternoons between 1pm and 4pm.

Version: 4 Review Date: May 2021  
Written by: X-Ray Department, Western Isles Hospital.

### Disclaimer

The content of this leaflet is intended to augment, not replace, information provided by your clinician. It is not intended nor implied to be a substitute for professional medical advice. Reading this information does not create or replace a doctor-patient relationship or consultation. If required, please contact your doctor or other health care provider to assist you to interpret any of this information, or in applying the information to your individual needs.

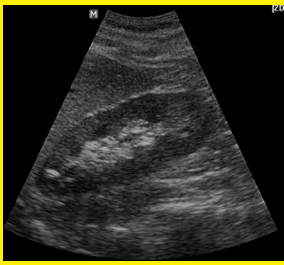


Bòrd SSN nan Eilean Siar  
NHS Western Isles

## Having an Ultrasound Scan



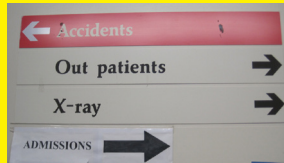
**X-ray Department  
Western Isles Hospital**



An ultrasound scan is a picture of the inside of your body.



Please come at the appointment time on your letter.



Follow the signs to X-ray.



Tell the person at the window in x-ray, that you have arrived. She is the receptionist and wears a green uniform.



The x-ray waiting room looks like this.

1



We will ask you to remove your clothes and put on a hospital gown.



The Radiographer does the scan and will be wearing a blue uniform.



A Healthcare Assistant will also be in the room. They will be wearing a light blue uniform.



We will ask you to lie flat on the table.

2



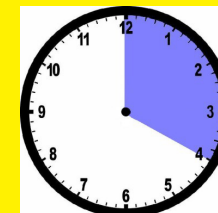
We will put some cold jelly on your body.



A special camera will move across your body.



After the scan we will ask you to get dressed.



The scan will take about 20 minutes.

3