

NHS WESTERN ISLES: ANNUAL REVIEW 2017-18

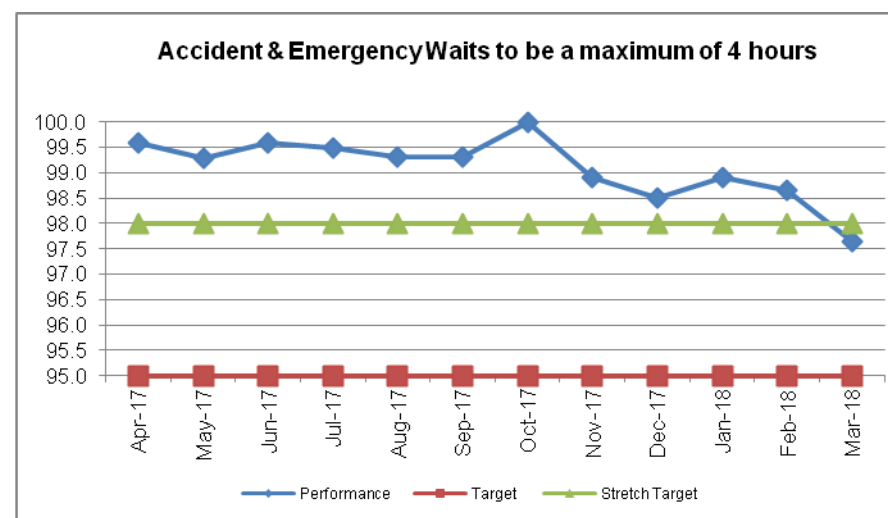
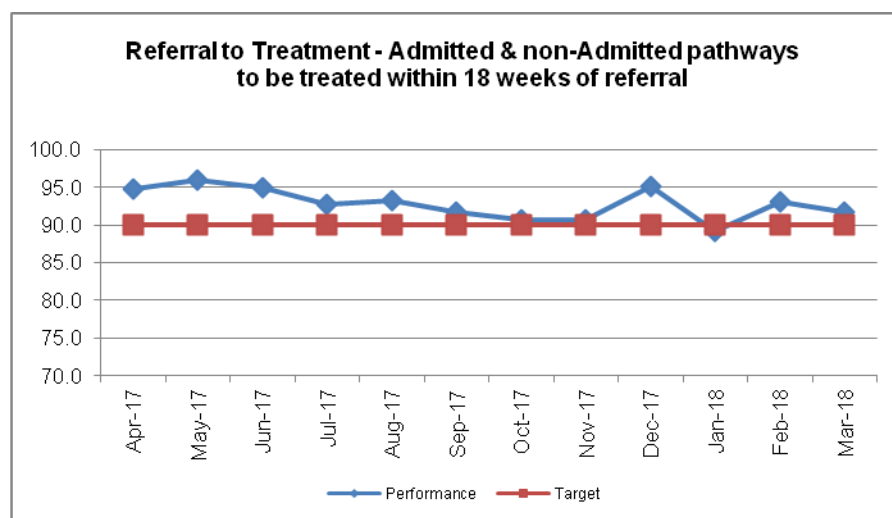
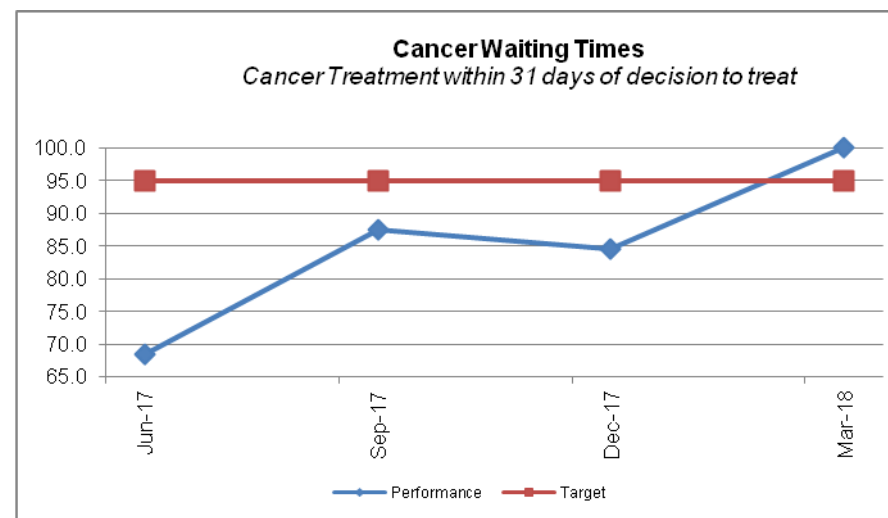
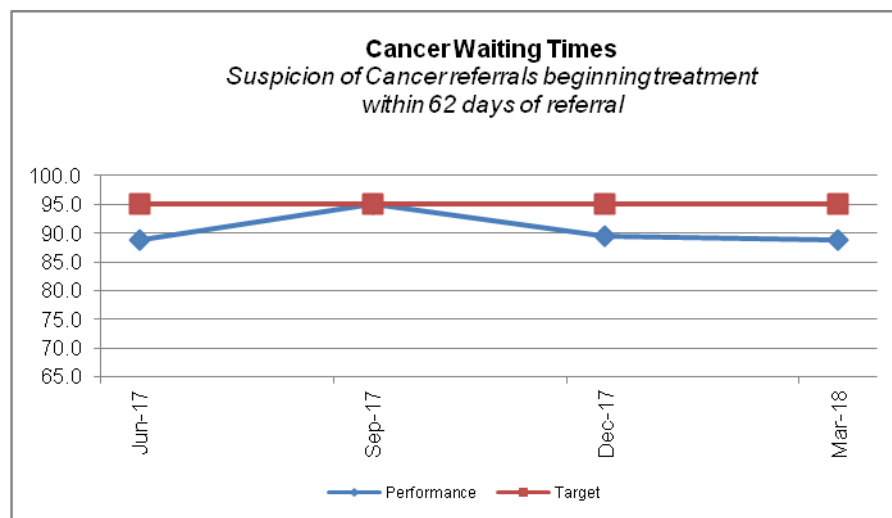
1) AT A GLANCE

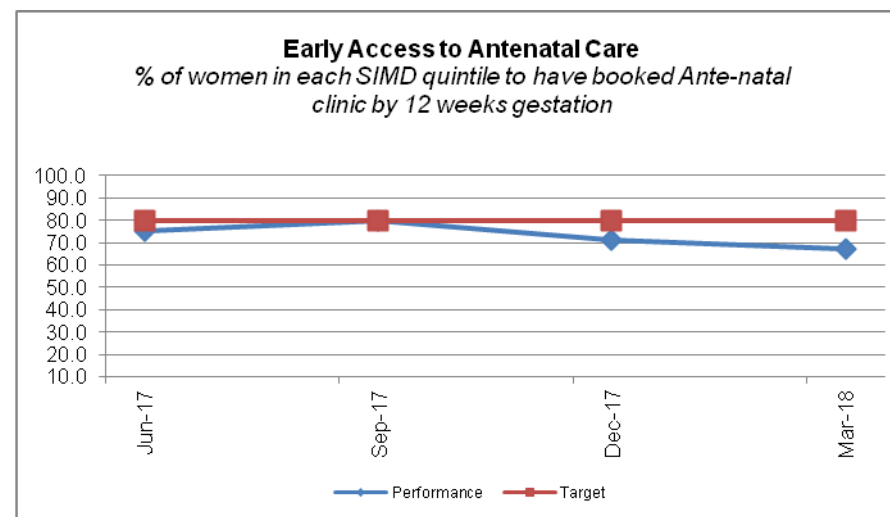
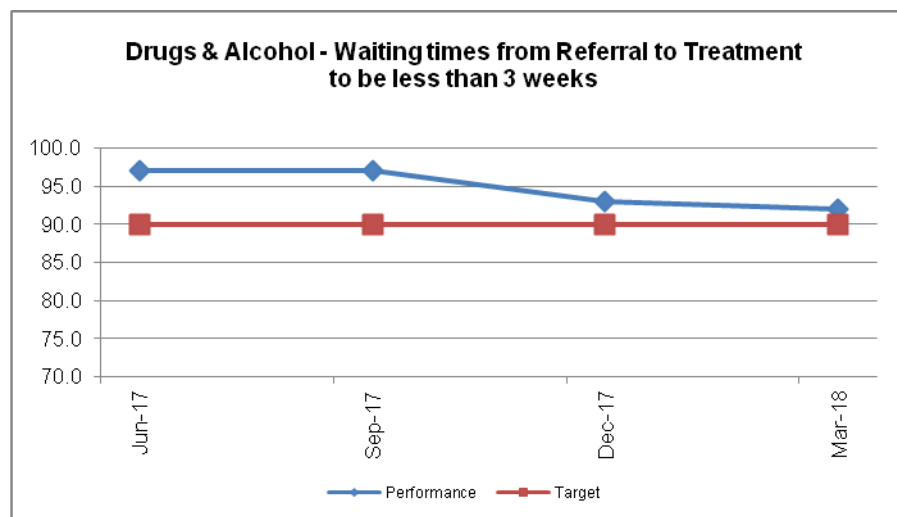
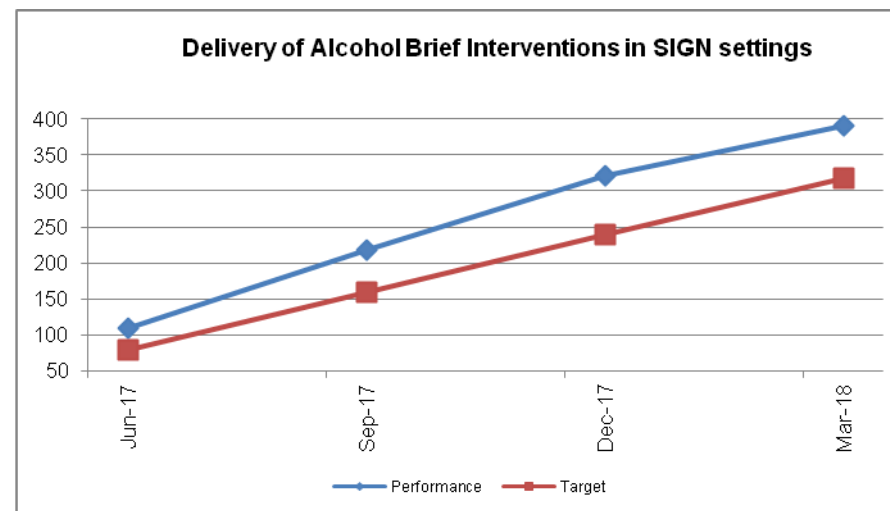
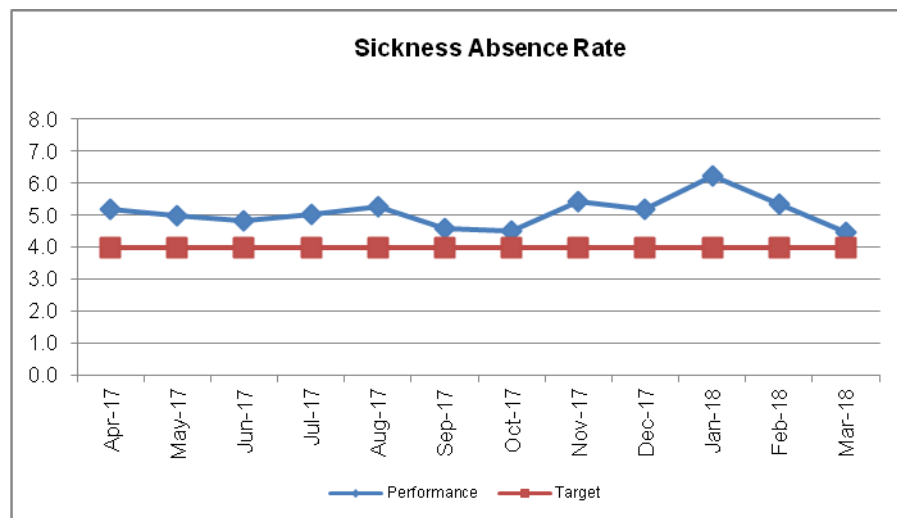
LOCAL DELIVERY PLAN STANDARD MEASURES	TARGET	Mar-18	Mar 17
The proportion of cancer patients treated within 31 days of decision to treat, stands at 100% against the target standard of 95% at March 2018.	95%	100%	96.6%
The proportion of cancer patients treated within 62 days of urgent referral stands at 88.9% against the target standard of 95% at March 2018.	95%	88.9%	85.7%
The proportion of patient journeys completed within 18 weeks from referral to treatment (combined performance of admitted and non-admitted) was 91.7% against the target standard of 90% at March 2018.	90%	91.7%	95.6%
At March 2018 the proportion of patients waiting over 4 hours in A&E is 97.7% against the national standard of 95% and the stretch target of 98%.	95%	97.7%	99.3%
The staff sickness absence rate is 4.5% at March 2018 slightly above the target standard of 4.0%.	4.0%	4.5%	6.0%
The number of alcohol brief interventions delivered in line with SIGN 74 guidelines during the year to March 2018 was 391 , ahead of the target of 317. However, the target delivery of 80% of ABIs in priority settings was not met.	317	391	294
The % of clients waiting no longer than 3 weeks from referral received to appropriate drug or alcohol treatment was 92% at March 2018.	90%	92%	94%
100% of eligible patients commenced IVF treatment within 12 months of decision to treat at March 2018.	90%	100%	100%
At least 80% of pregnant women in each SIMD quintile will have booked for antenatal care by the 12 th week of gestation. At March 2018, provisional local figures show a performance of 67% against the national standard.	80%	67%	91%
At March 2018, the percentage of patients giving a positive response for booking an appointment with a GP, 3 or more working days in advance was 85.2% , not meeting the standard of 90% .	90%	85.2%	89.4% (Mar 16)

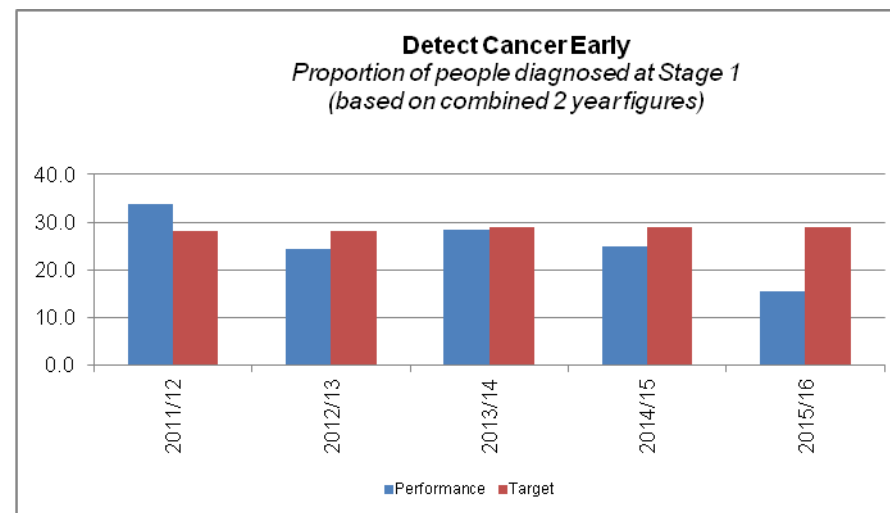
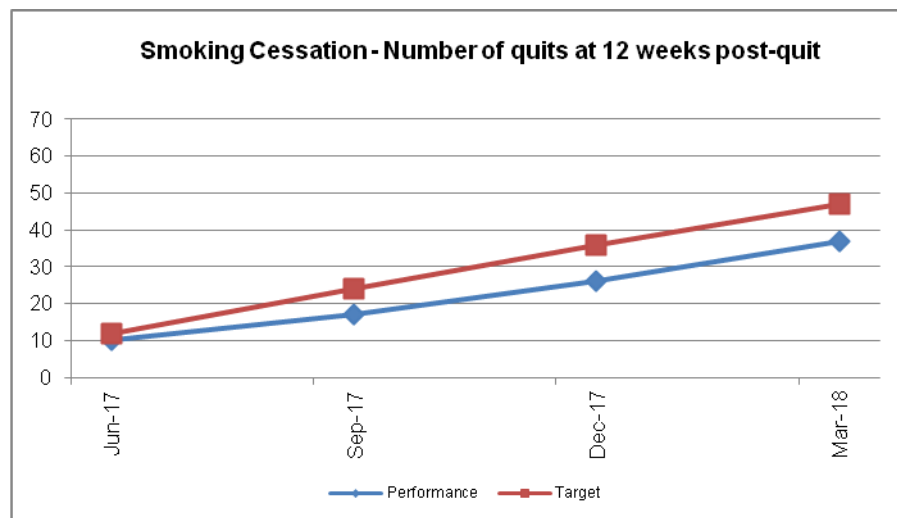
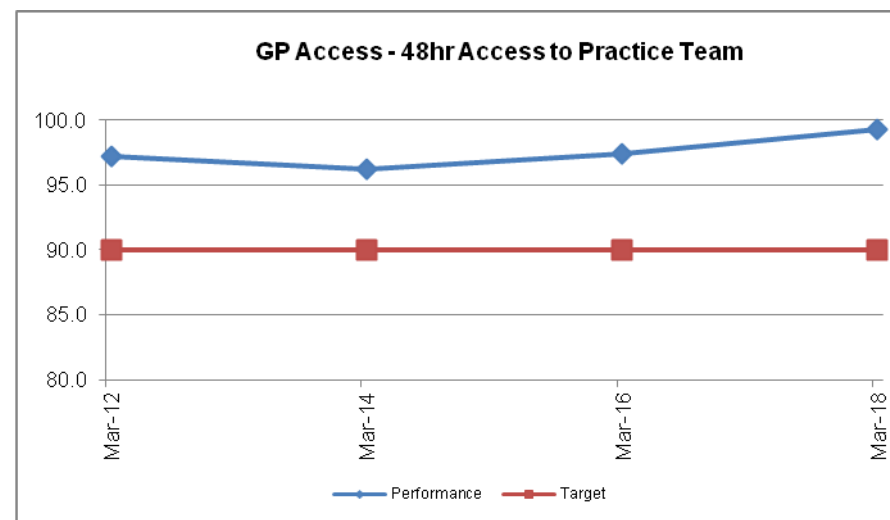
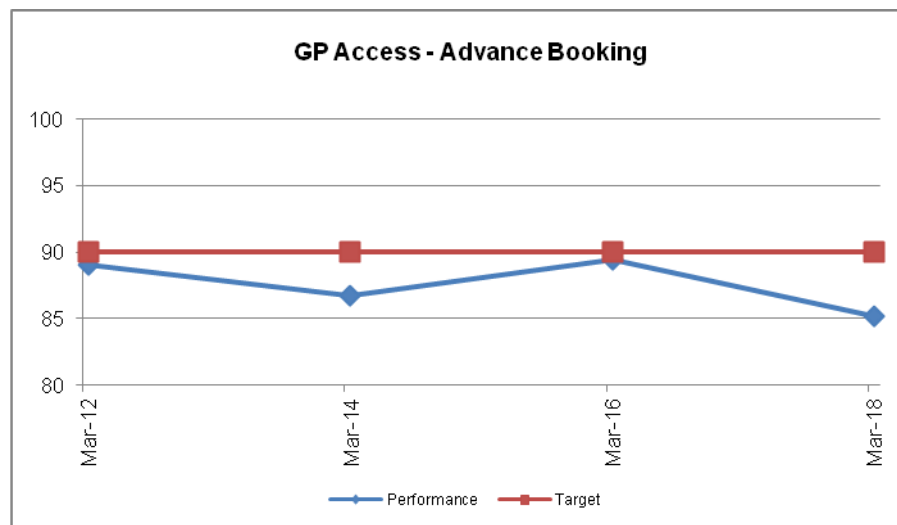
LOCAL DELIVERY PLAN STANDARD MEASURES	TARGET	Mar-18	Mar 17
At March 2018, the percentage of people giving a positive response for 48 hour access to an appropriate healthcare professional was 99.3% , ahead of the standard of 90% .	90%	99.3%	97.4% (<i>Mar 16</i>)
The number of persons in the 60% most deprived within-Board quintiles successfully quitting smoking following a decision to quit was 37 (measured at 12 weeks post-quit); against the target of 47 quits at March 2018. The total number of quits (in all quintiles) at 3 months post-quit was 56 .	47	37	64
At December 2016, 15.4% of people were diagnosed and treated in the first stage of breast, colorectal and lung cancer, below the planned target of 29% .	29%	15.4 (<i>Dec 16</i>)	25.0 (<i>Dec 15</i>)
The Board has operated within its revenue limit to March 2018 and has achieved breakeven position for the year.	Breakeven	Achieved	Achieved
At March 2018, 100% of patients waited less than 18 weeks for referral to specialist Child and Adolescent Mental Health Services treatment, ahead of the 90% standard.	90%	100%	100%
At March 2018, 74% of patients waited less than 18 weeks for referral to treatment for Psychological Therapies, against the target standard of 90% .	90%	74%	96%
The infection rate of Staphylococcus aureus bacteraemia infections (incl. MRSA) cases is 0.25 (per 1,000 acute occupied bed days) at March 2018, slightly above the national standard of 0.24 .	0.24	0.25	0.39
The infection rate of Clostridium Difficile associated disease among patients aged 15+ is 0.14 (per 1,000 occupied bed days) at March 2018 achieving better than national standard of 0.32 .	0.32	0.14	0.15
There were 292 people on the Western Isles QOF Dementia Register at March 2018 – below the target of 324.	324	292	307 (<i>target 315</i>)
22% of all people newly diagnosed with dementia received a minimum of 1 year of post-diagnostic support and have a person-centered plan in place, at March 2018.	100%	22%	0

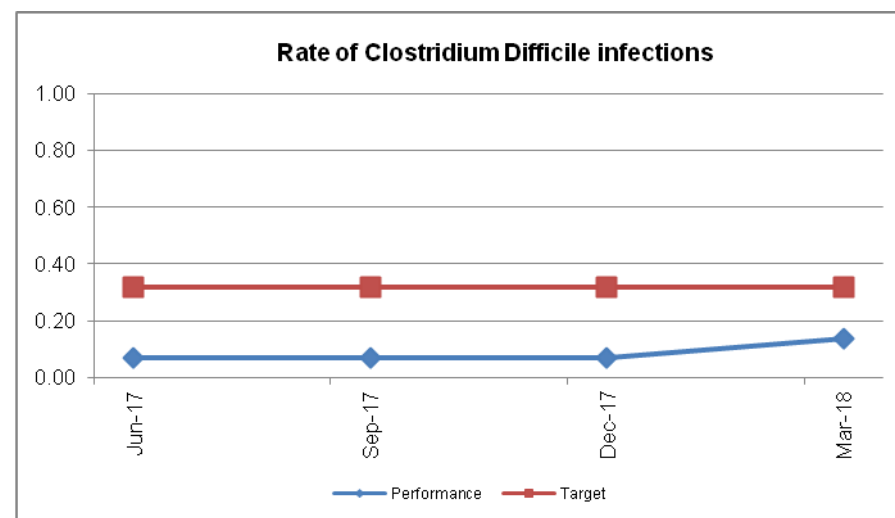
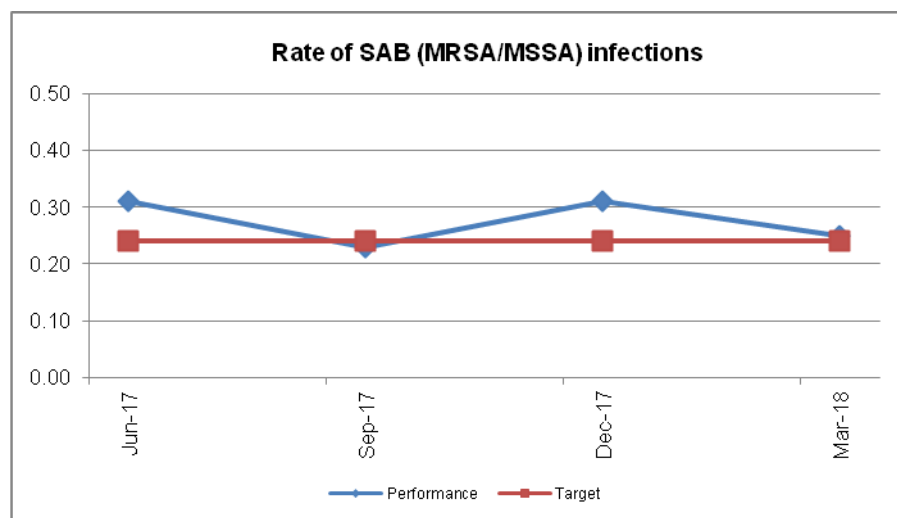
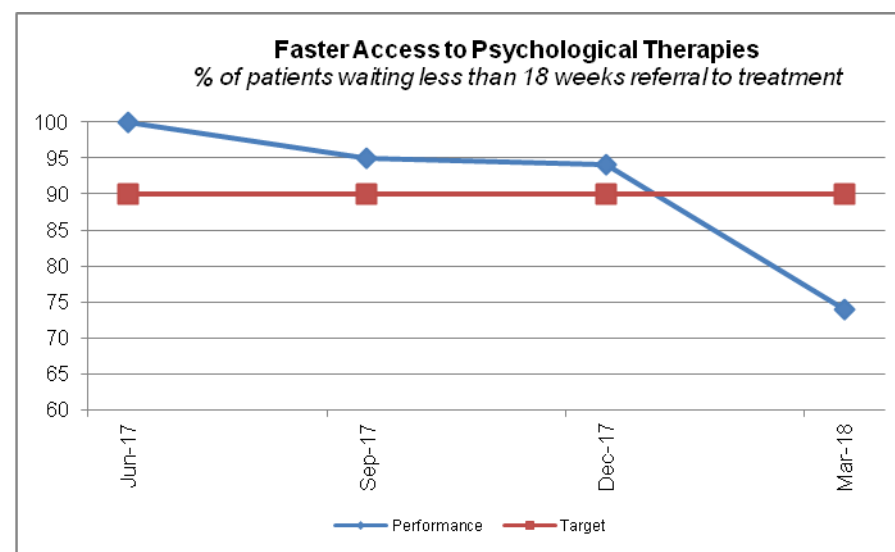
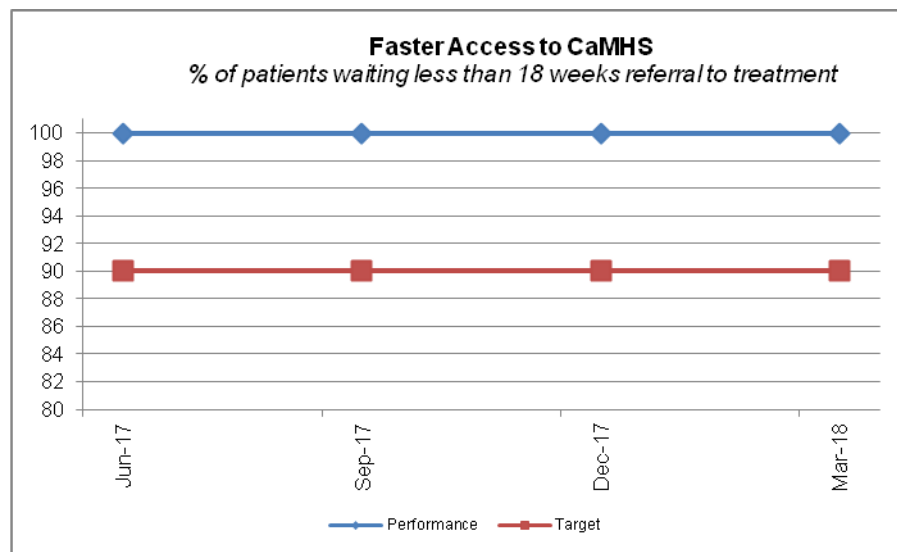
LOCAL DELIVERY PLAN STANDARD MEASURES	TARGET	Mar-18	Mar 17
100% of all patients referred for treatment as inpatients or daycases were treated within the 12 week treatment time guarantee at March 2018.	100%	100%	100%
At March 2018, 88.9% of patients waited less than 12 weeks for their first outpatient appointment against the national target for 95% of patients to be seen within 12 weeks.	95%	88.9%	95.2%
At March 2018, 94.2% of all patients waited less than 16 weeks for their first outpatient appointment against the national standard for 100% of patients to be seen within 16 weeks.	100%	94.3%	97.3%

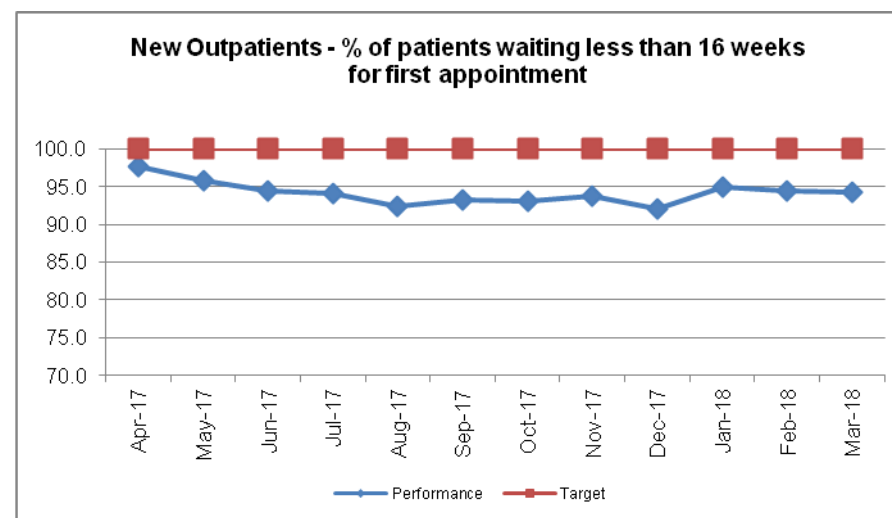
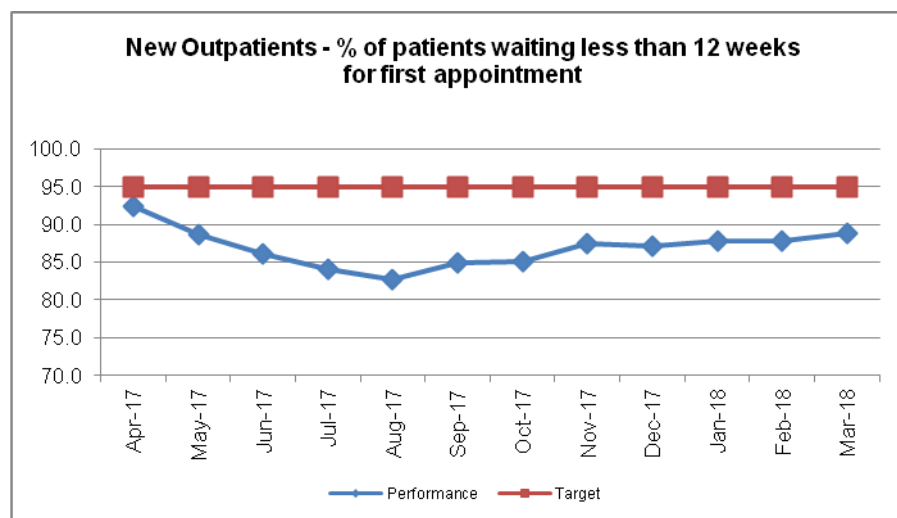
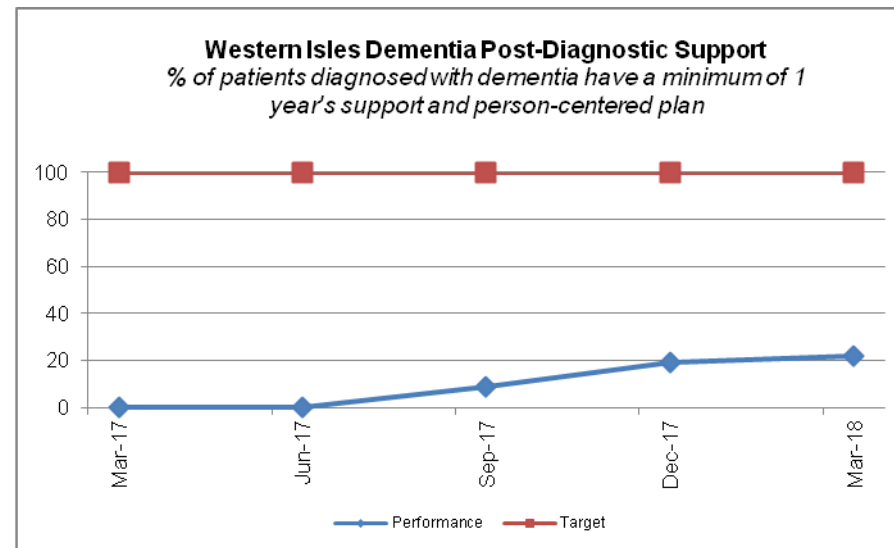
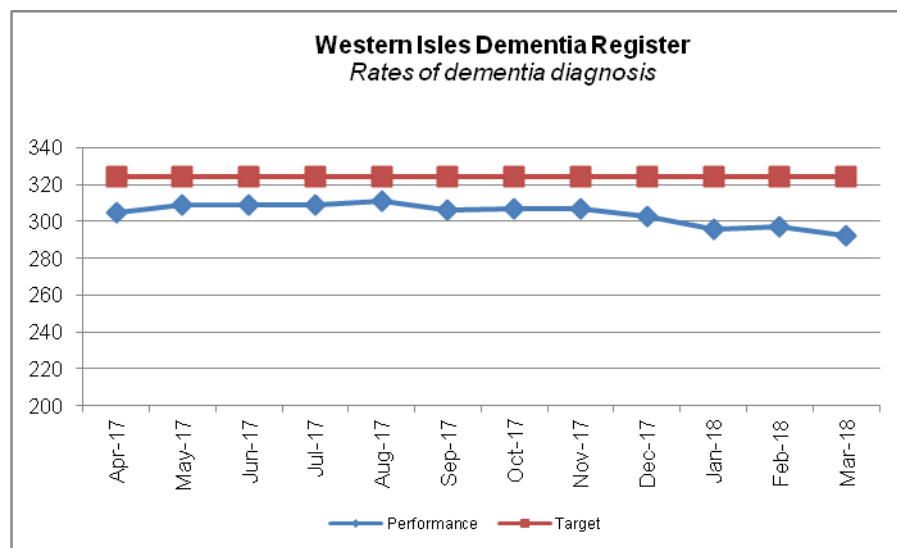
Performance Status Key – LDP STANDARDS:
Red = Standard not maintained
Green = Standard maintained














NHS WESTERN ISLES: ANNUAL REVIEW

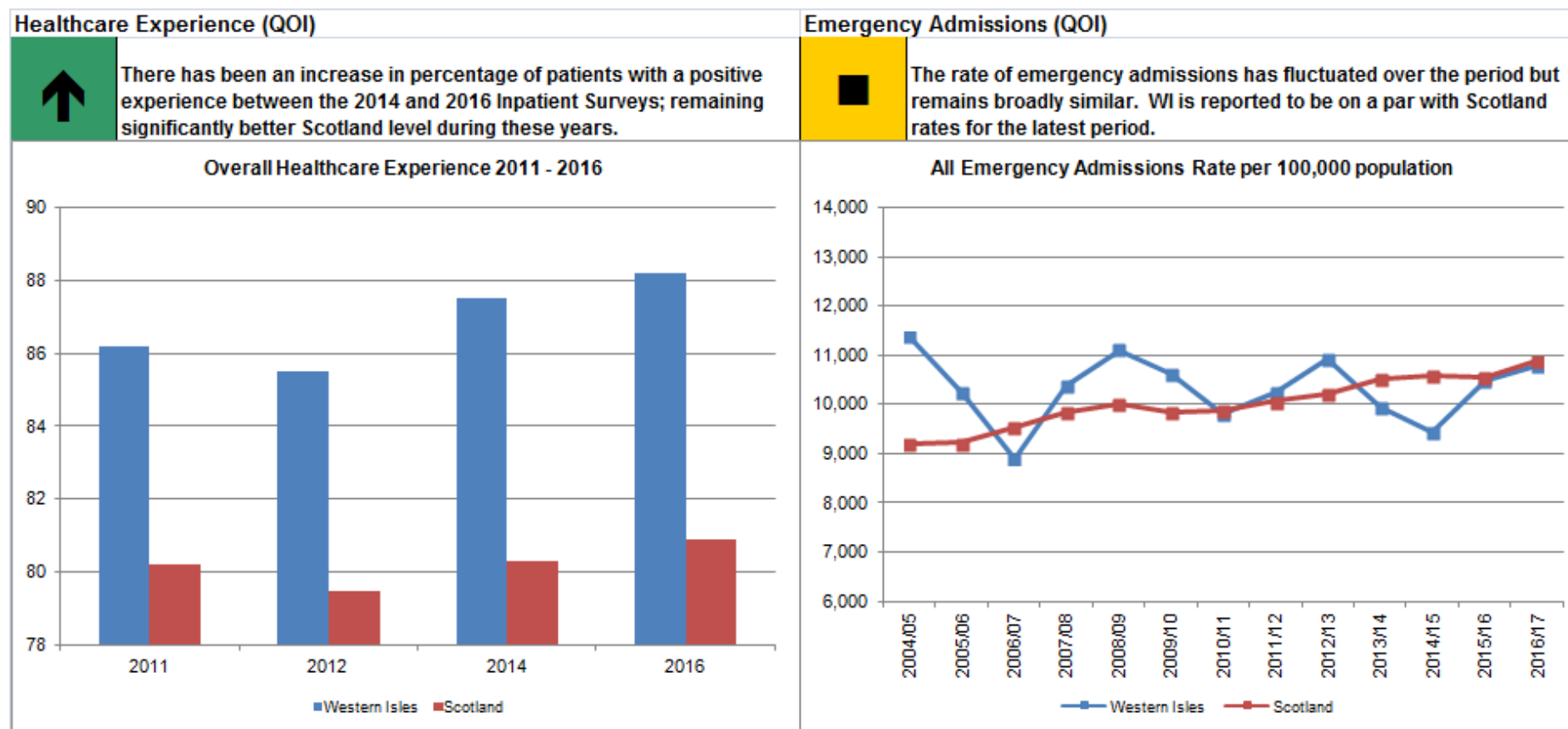
OUTCOMES

In line with the Scottish Government's outcomes focused approach, below are provided a series of charts displaying the progress over a range of outcomes indicators. These indicators are drawn from the national NHS Scotland Quality Outcome Indicators (QOI), national Integration Outcome Indicators (IOI), Community Care Outcome measures (CCO) and the local Outer Hebrides Single Outcome Agreement (SOA) along with other relevant local health outcomes.

Key:

	Denotes improvement in trend over period or performance better than Scottish equivalent measure.
	Denotes worsening trend over period or performance worse than Scottish equivalent measure.
	Denotes no change in trend over period or performance same as the Scottish equivalent measure.

a) Quality Outcome Indicators (QOI) and Integration Outcome Indicators (IOI)

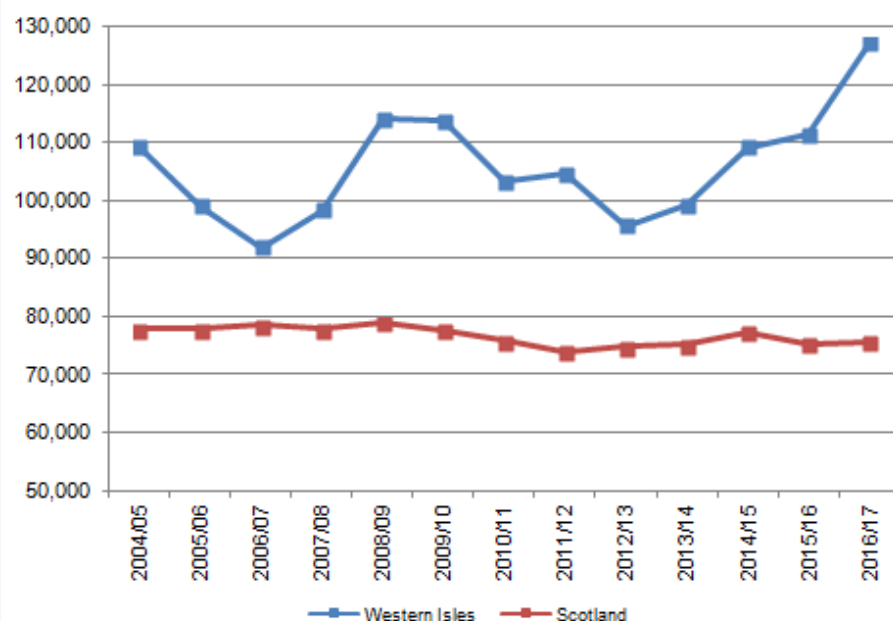


Emergency Admissions - Bed days (QOI)



There has been a very slight increase in the rate of all emergency bed days in the Western Isles from start of period to 2015/16, however, the rate has greatly increased in the period to March 2017 and remains consistently higher than the national rate.

All Emergency Admissions Bed Day Rate per 100,000 population

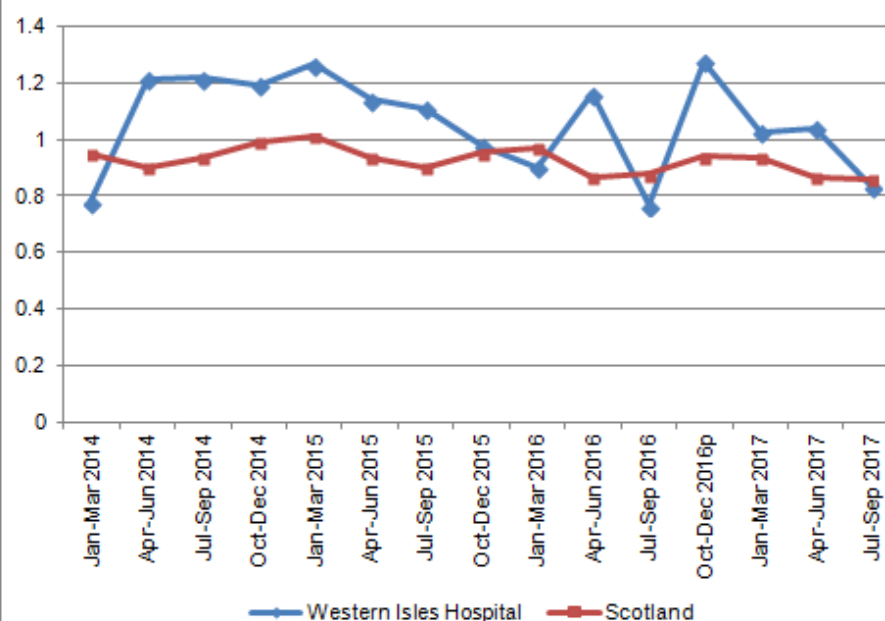


Quarterly Hospital Standardised Mortality Ratios (QOI)



There has been a downward trend in the HSMR since the beginning of the period. Western Isles is below both Scotland baseline (1.0) and the Scotland rate. Fluctuations are likely to be due to the small numbers involved and a change in the criteria used for this measure.

Hospital Standardised Mortality Ratio (HSMR)

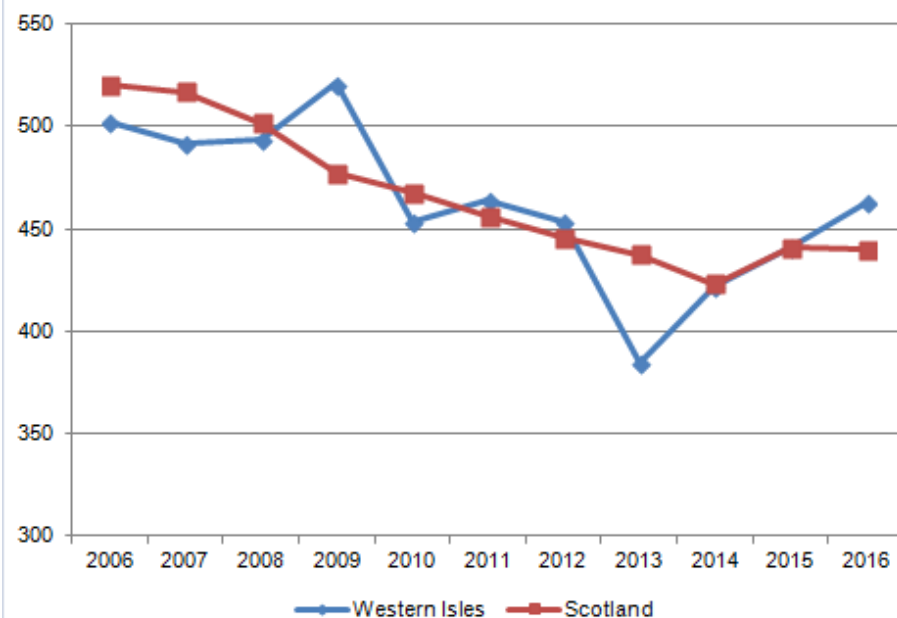


Premature Mortality in <75s (QOI)



There is an overall decreasing trend in the number of people dying prematurely, with the Western Isles rate currently slightly above the Scotland rate.

Under 75s age standardised death rates per 100,000 population

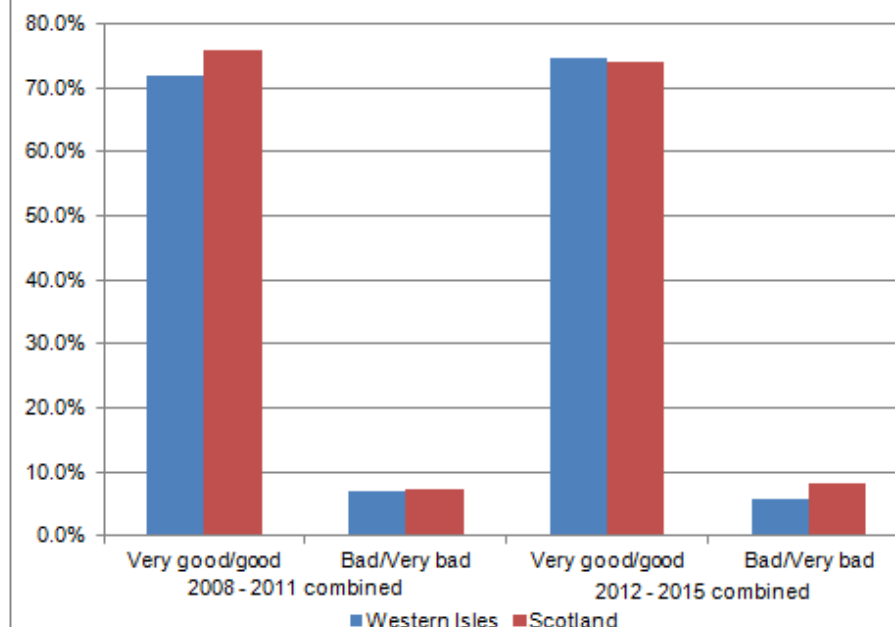


Self-Assessed General Health (QOI)



Almost 75% of adults in the Western Isles describe their health as being either Very Good or Good, slightly above the Scotland rate and an improvement on the previous period.

Self-Assessed General Health

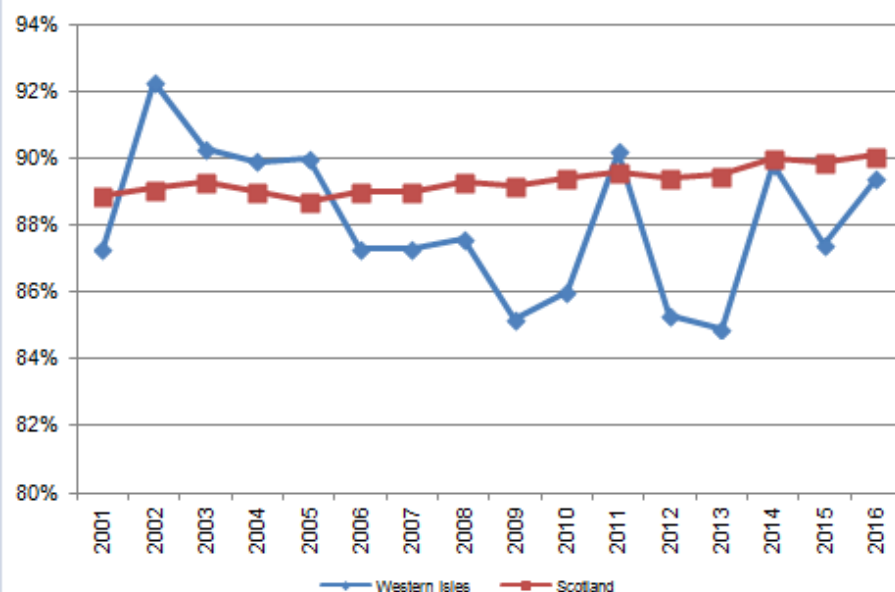


Percentage of Babies of Healthy Birthweight (QOI)



There is a downward trend in the % of babies born with an appropriate weight for their gestational age in the period, with a slight increase in rate over the final year of the period. Fluctuations are likely to be due to the small numbers involved.

Percentage of Babies Of Healthy Birthweight
(appropriate weight for Gestational Age)

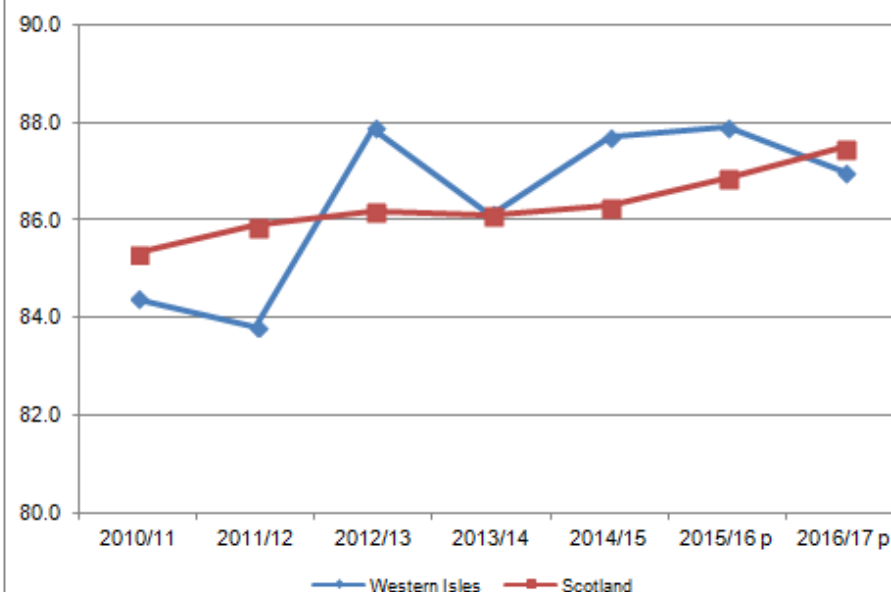


End of Life Care (QOI)



There is an increasing trend in the time spent at home or in the community during the last 6 months of life, dipping slightly below the national rate in 2016/17.

Percentage of time in the last 6 months of life spent at home or
in a community setting

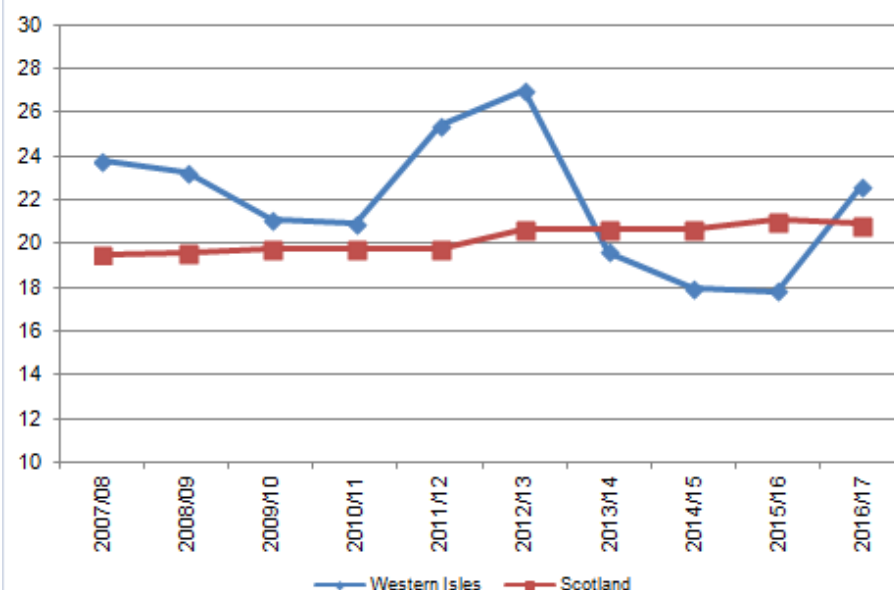


Emergency Hospital Admissions resulting from a Fall in 65+ (IOI)

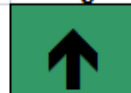


There is a small downward trend in the number of Emergency Admissions resulting from a fall in those aged 65+. However, an increase in rate is seen in the final year of the period.

Emergency Hospital Admissions resulting from a Fall, age 65+ discharge rate per 1000

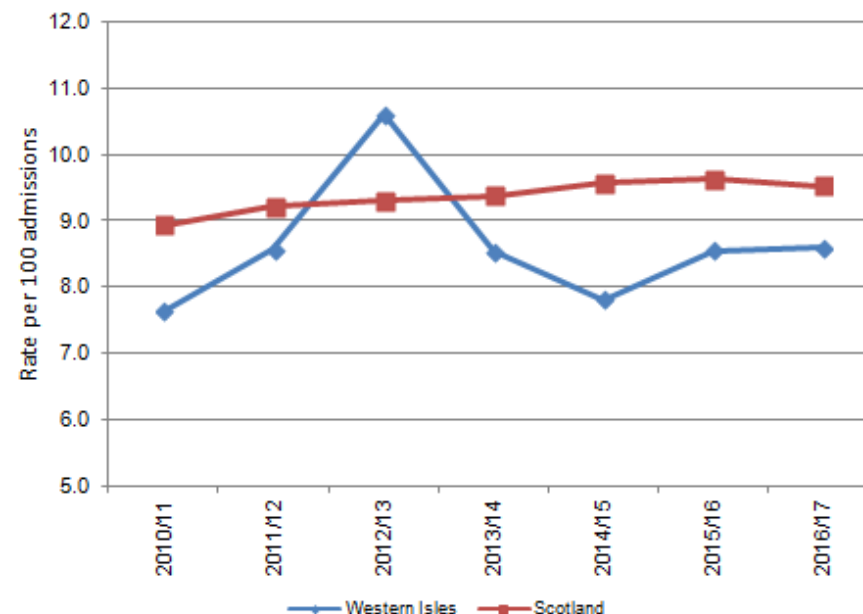


Emergency Readmissions within 28 days (IOI)

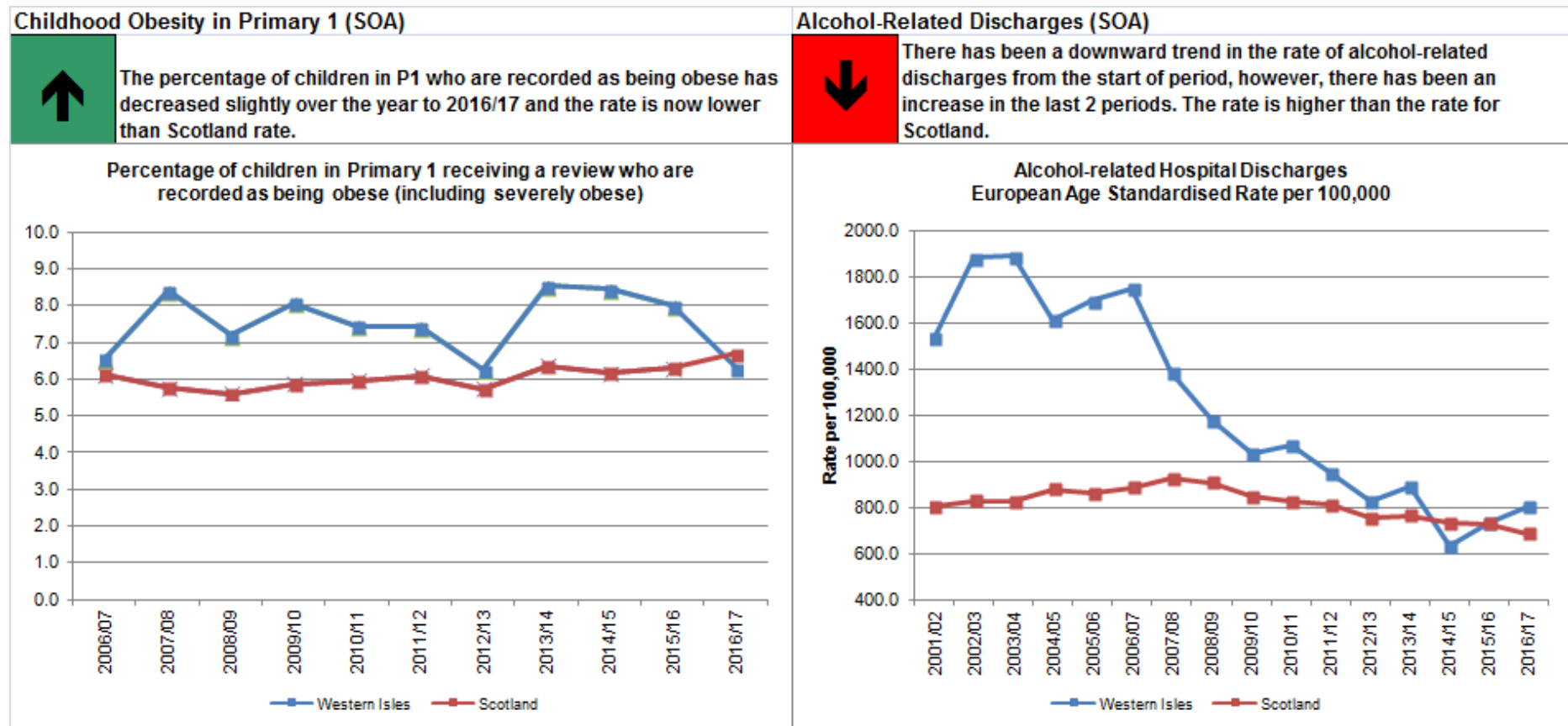


The trend of Emergency Readmissions within 28 days of being discharged has remained static over the period. Western Isles has remained consistently below Scotland over the last 4 years.

Emergency Readmissions within 28 days



- b) Other Health Outcomes including Integration Outcome Indicators (IOI), Local Single Outcome Agreement Indicators (SOA) and Community Care Outcome Indicators (CCO)

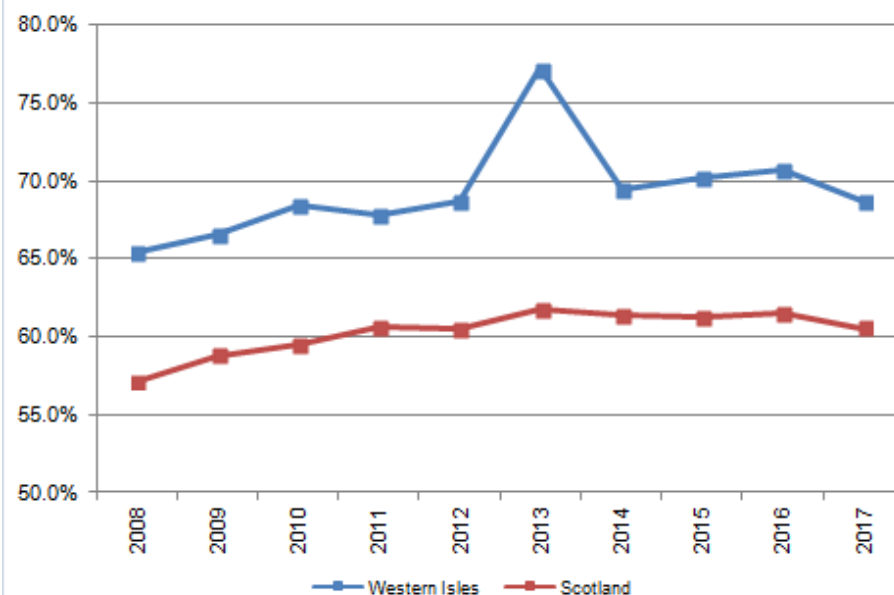


Care at home (SOA)



The percentage of older people with intensive care needs receiving care at home has increased over the years to 2017 and remains consistently higher than the Scottish average.

Proportion of People aged with Complex Care Needs Cared for at Home

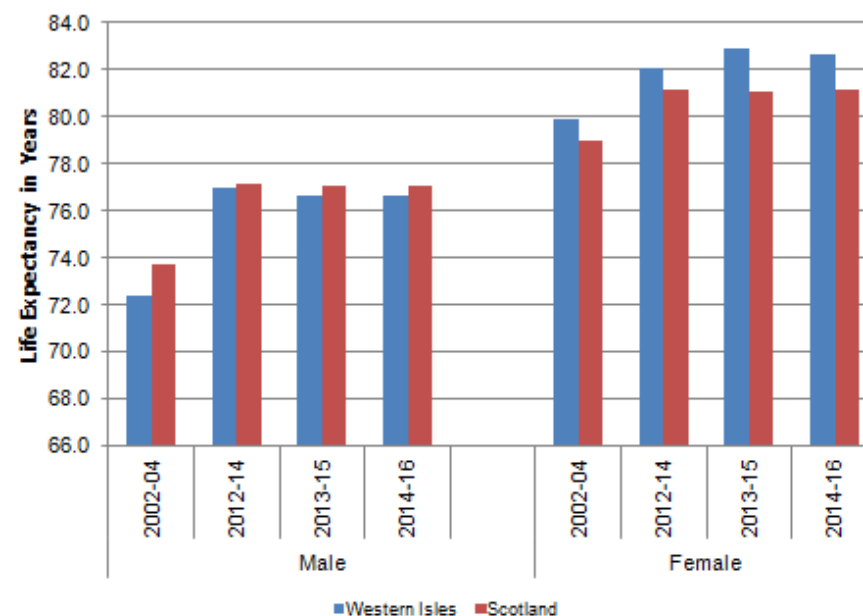


Life Expectancy at Birth (SOA)



There has been an increase in life expectancy for females in the Western Isles - remaining consistently above Scotland, with male life expectancy remaining at a similar level to that seen in 2013 - 2015.

Life Expectancy at Birth

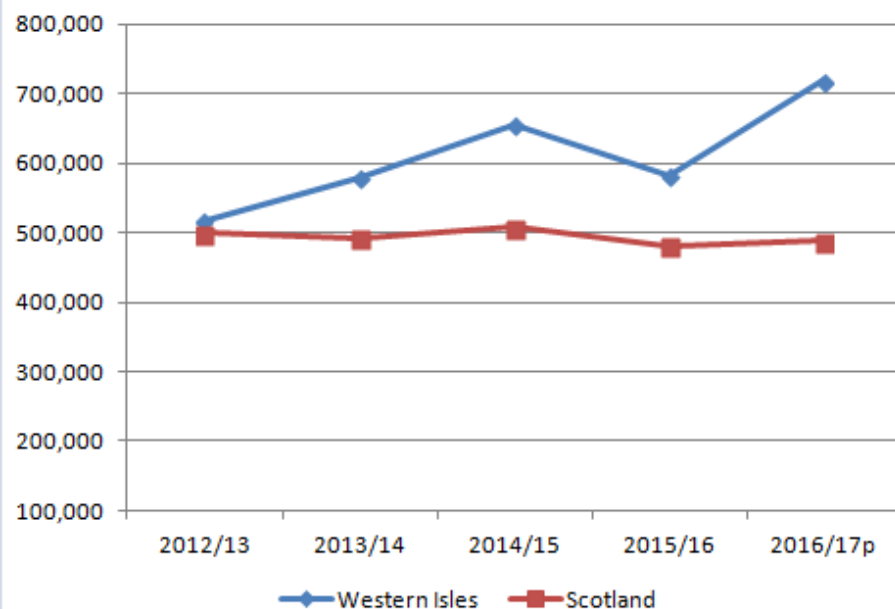


Emergency Inpatient Bed Day Rate in 75+ (Reshaping Care Core Measure)



There has been an increasing trend in Emergency Admission bed days in the 75+ population over the period. The rate remains above the rate for Scotland.

75+ Rate of Emergency Bed days per 100,000 population

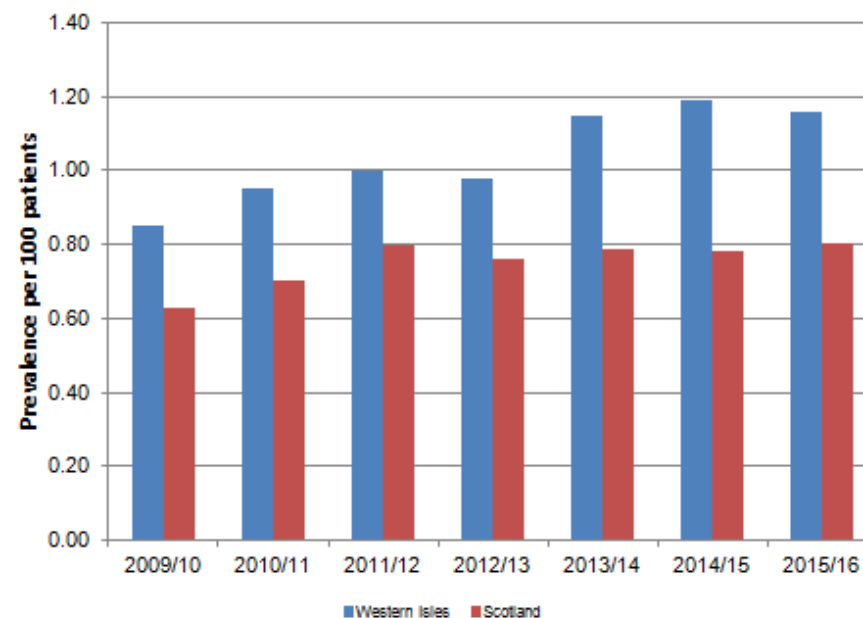


Dementia Diagnosis (Reshaping Care Core Measure)



The crude prevalence rate of patients on Western Isles QOF Registers with a diagnosis of Dementia has increased steadily with a very slight decline in the latest period, however, it remains higher than Scotland.

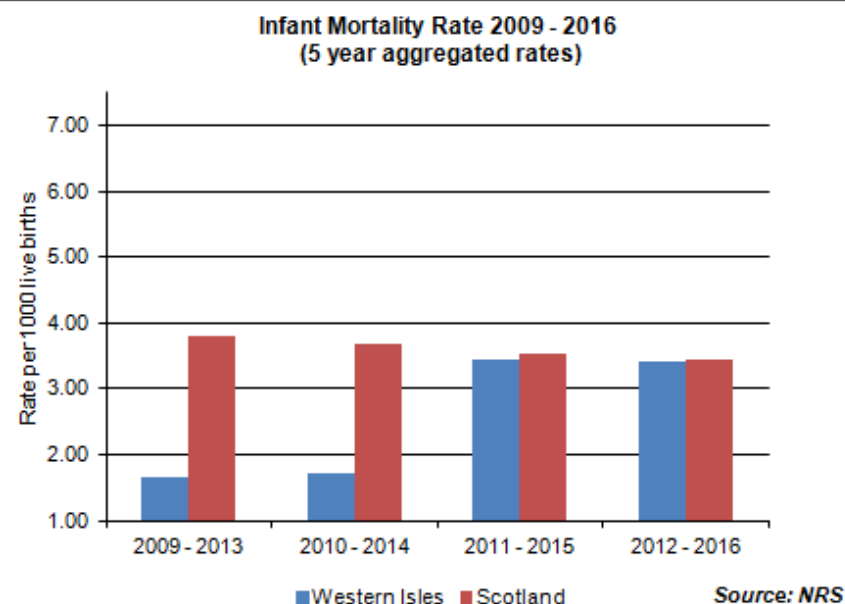
Dementia Prevalence - Dementia Register (QOF)



Infant Mortality Rate (Early Years)



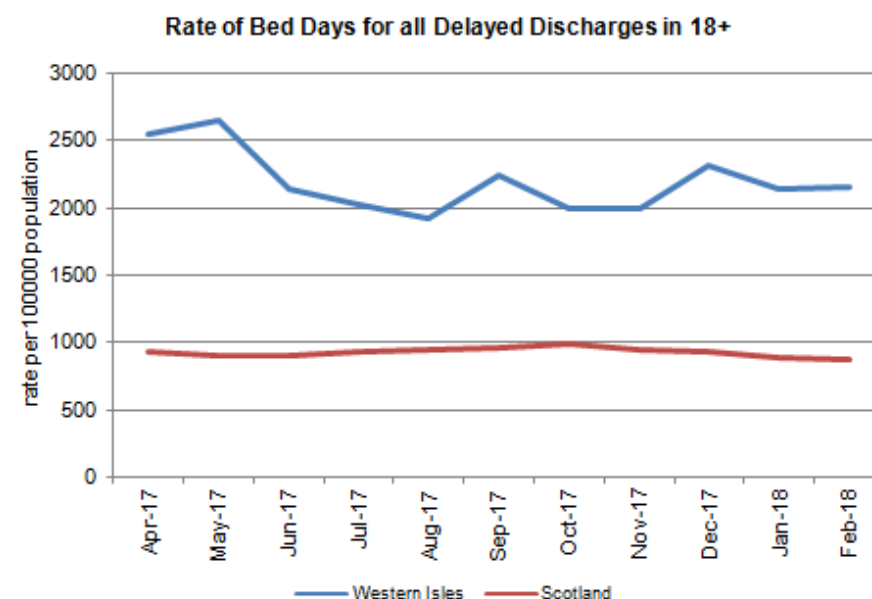
The rate of infant mortality (aged less than 1 year) per 1000 live births over the last 5 years is similar to the Scottish rate. However, small numbers can cause significant variation.



Bed Days for Delayed Discharges (Reshaping Care Core Measure)



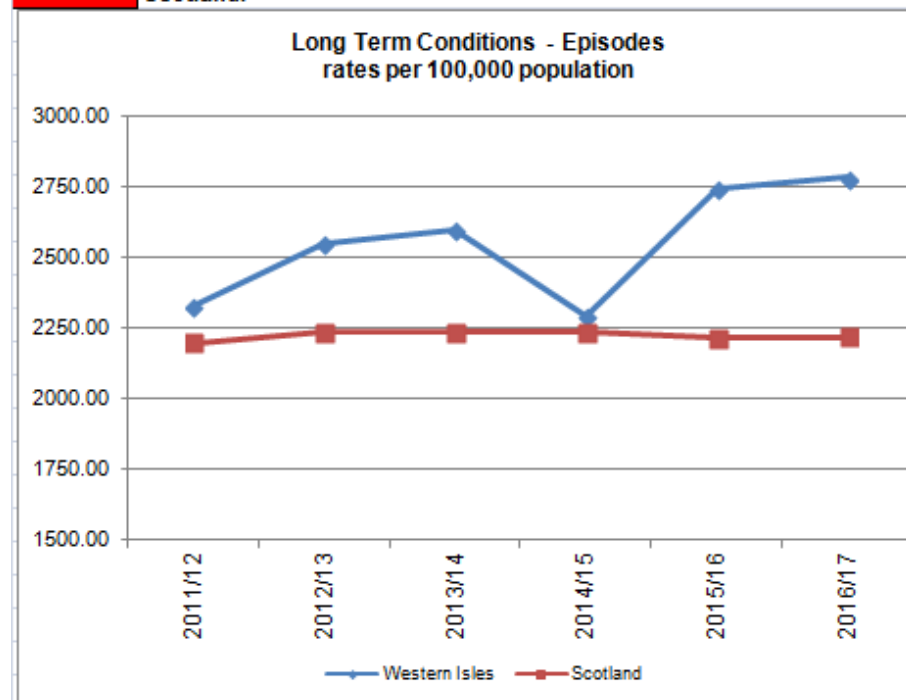
The rate of bed days attributed to delayed discharges has decreased since April 2017 and a downward trend is emerging. However, the rate remains above the Scotland rate. These rates relate to all Delayed Discharges in adults aged 18+.



Long Term Conditions - Episodes



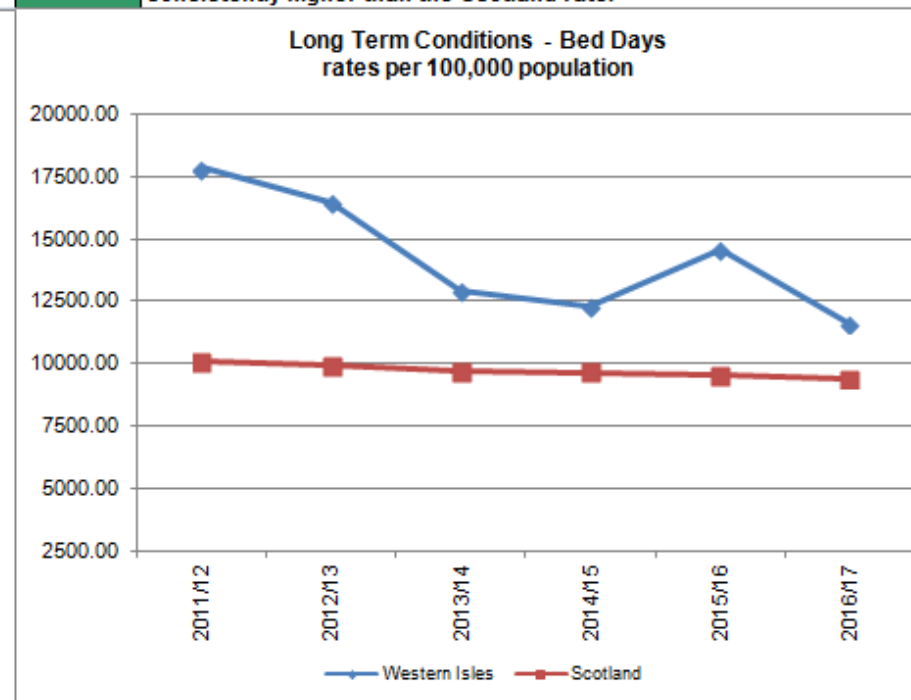
There has been an increase in the number of hospital admissions attributed to Long Term Conditions. The rate remains above that for Scotland.



Long Term Conditions - Bed Days



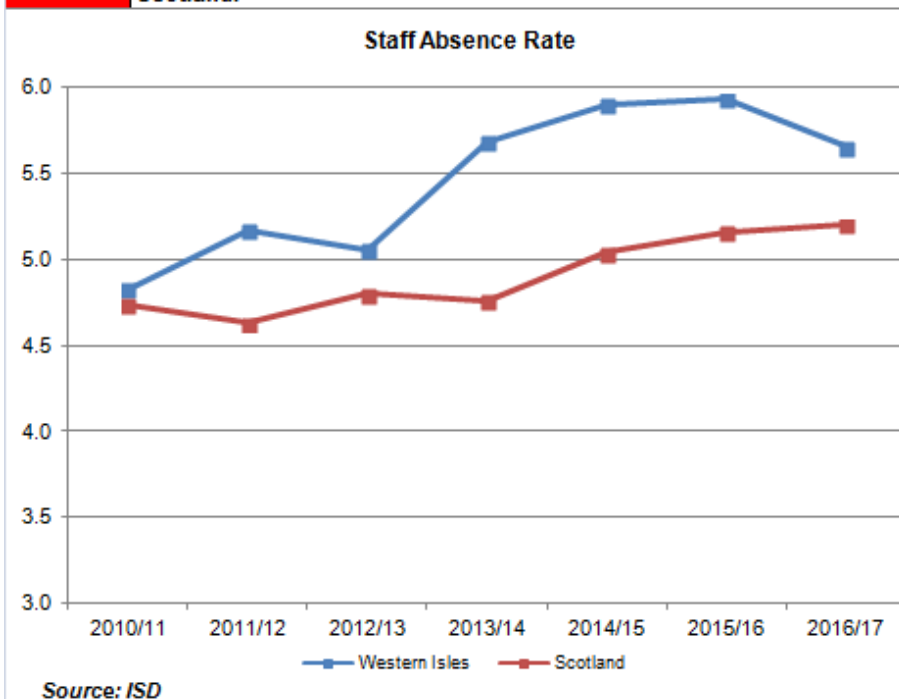
There has been a downward trend in the number of bed days attributed to Long Term Conditions over the period, however, the rate remains consistently higher than the Scotland rate.



Staff Absence Rate



Staff Absence is showing an upward trend with a slight decrease in rate over the final year of the period. The rate remains above that of Scotland.



Same Day Surgery



There is an overall increase in the number of procedures performed in daycase or outpatient settings, in line with the Scotland trend.

