

# Barra and Vatersay Community Campus Consultation Boards



hebridean housing partnership



## Welcome

On behalf of NHS Western Isles, Comhairle nan Eilean Siar and Hebridean Housing Partnership, thank you for taking the time to visit the Barra and Vatersay Community Campus online public exhibition. The purpose of the exhibition is to provide you with background information on the project and the developing concept design strategy. We would welcome any comments you may have on these outline designs as these are valuable for us as we develop the design towards a full planning application in early 2021.

## Background

The need for new health, learning and community facilities to replace the existing St Brendans hospital and social care housing, Castlebay Community School and Castlebay and Eoligary Primaries will be a significant investment in public services for the Barra and Vatersay communities. The campus approach which has been adopted to deliver these services follows an extensive options appraisal exercise and engagement with key stakeholders and the local community. The new Barra and Vatersay Community Campus will comprise early learning, primary school and secondary school facilities, social care housing, primary health centre, hospital, blue light facilities, community space and office space with associated parking, bus drop off and provision of external landscape and sports spaces in the Castlebay area of Barra on the site of the existing Castlebay Community School and land south of the A888.

The vision is one of substantive, beneficial, long term step change that places the islands and their citizens on a path to enhanced health, wellbeing and community resilience for the 21st century. It will be a catalyst for change, and components of this vision include:

- Redesigned public services that reflect international best practice in how a small island community can be supported to achieve its potential
- A campus that enables multi-agency working to blur historic organisational and professional boundaries, placing the citizen at the heart of service delivery
- Changes in how citizens engage with public services, recognising their own responsibilities, to self and the community
- A design that reflects island tradition and heritage, and acts as a destination for both islanders and visitors

## Identified Strategic Objectives

The Barra and Vatersay Community Campus is about achieving improved outcomes for the community it will serve.

Increasing educational attainment, skills and lifelong learning on the island

Improving health, safety and wellbeing of the community

Improved accessibility to services

A fully integrated approach to delivery of services

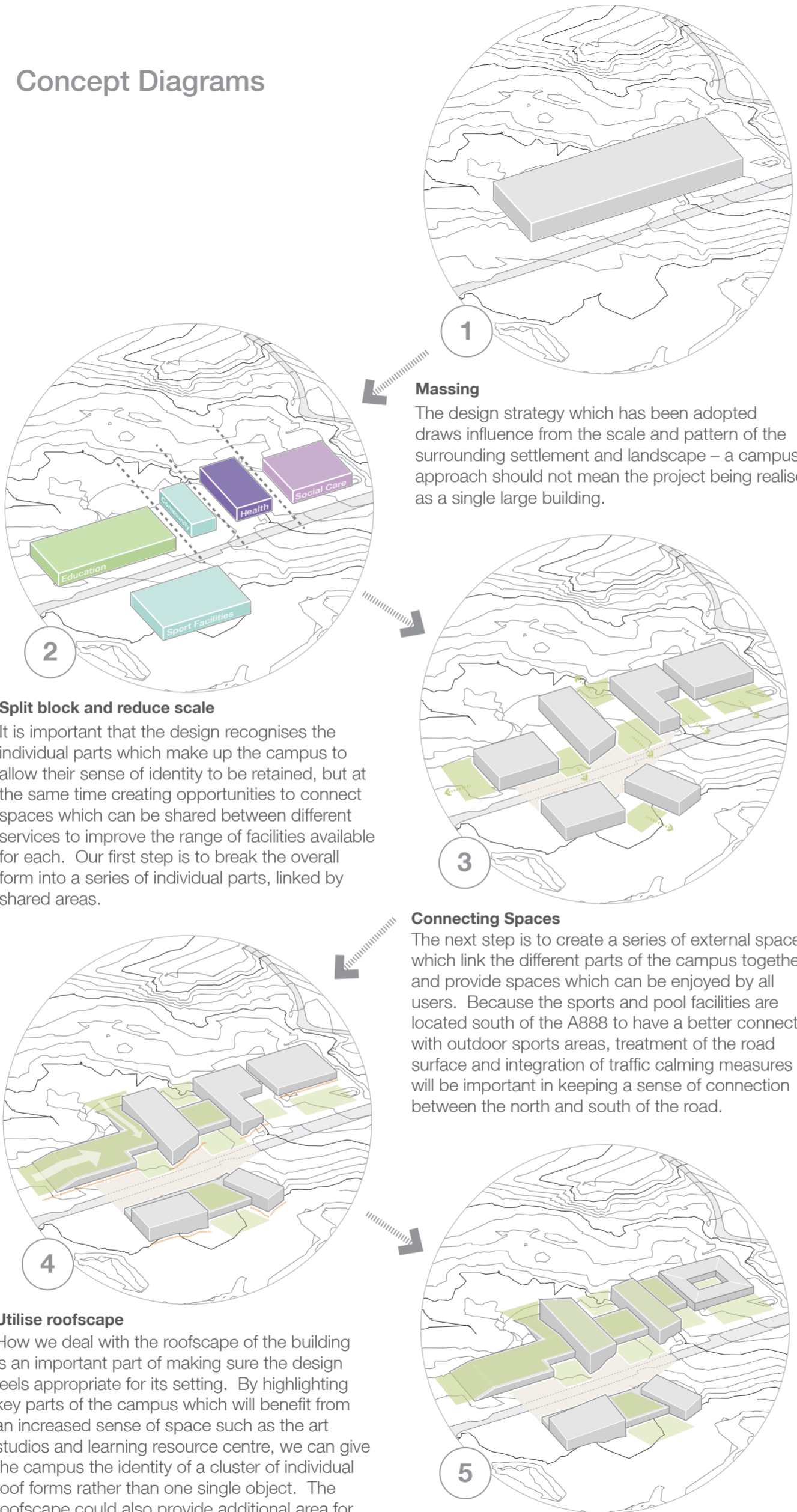
Creating an asset for the island that improves resilience and is futureproof

Enabling a positive visitor and user experience year round

Promoting heritage, culture and performing arts

Improving digital connectivity

## Concept Diagrams



**Massing**  
The design strategy which has been adopted draws influence from the scale and pattern of the surrounding settlement and landscape – a campus approach should not mean the project being realised as a single large building.

**Split block and reduce scale**  
It is important that the design recognises the individual parts which make up the campus to allow their sense of identity to be retained, but at the same time creating opportunities to connect spaces which can be shared between different services to improve the range of facilities available for each. Our first step is to break the overall form into a series of individual parts, linked by shared areas.

**Connecting Spaces**  
The next step is to create a series of external spaces which link the different parts of the campus together and provide spaces which can be enjoyed by all users. Because the sports and pool facilities are located south of the A888 to have a better connection with outdoor sports areas, treatment of the road surface and integration of traffic calming measures will be important in keeping a sense of connection between the north and south of the road.

**Utilise roofscape**  
How we deal with the roofscape of the building is an important part of making sure the design feels appropriate for its setting. By highlighting key parts of the campus which will benefit from an increased sense of space such as the art studios and learning resource centre, we can give the campus the identity of a cluster of individual roof forms rather than one single object. The roofscape could also provide additional area for external play.

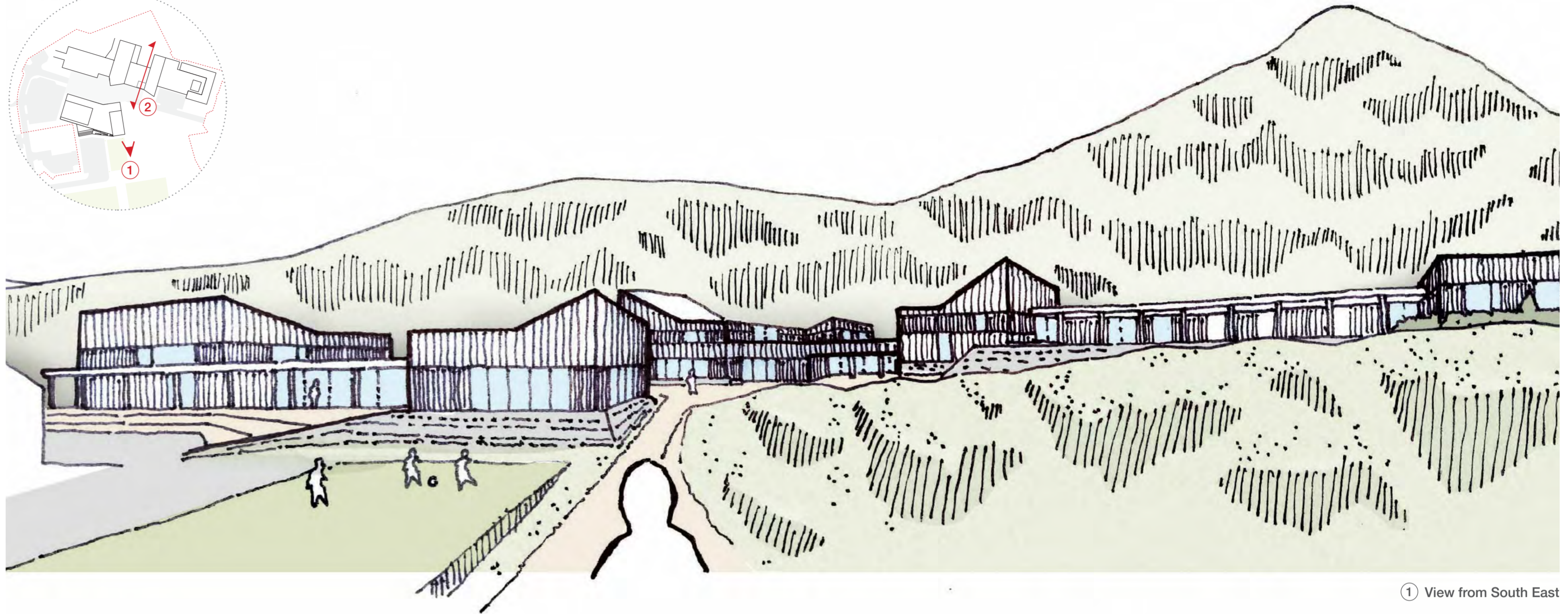
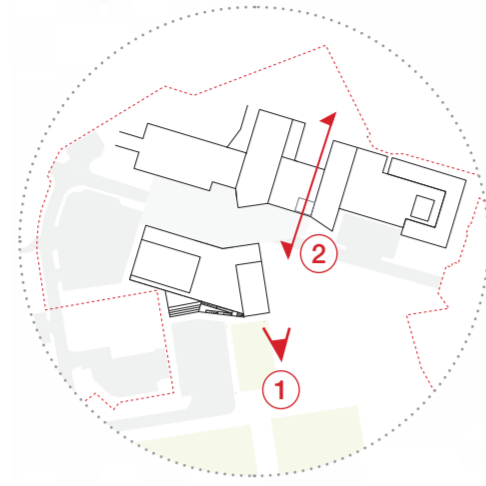
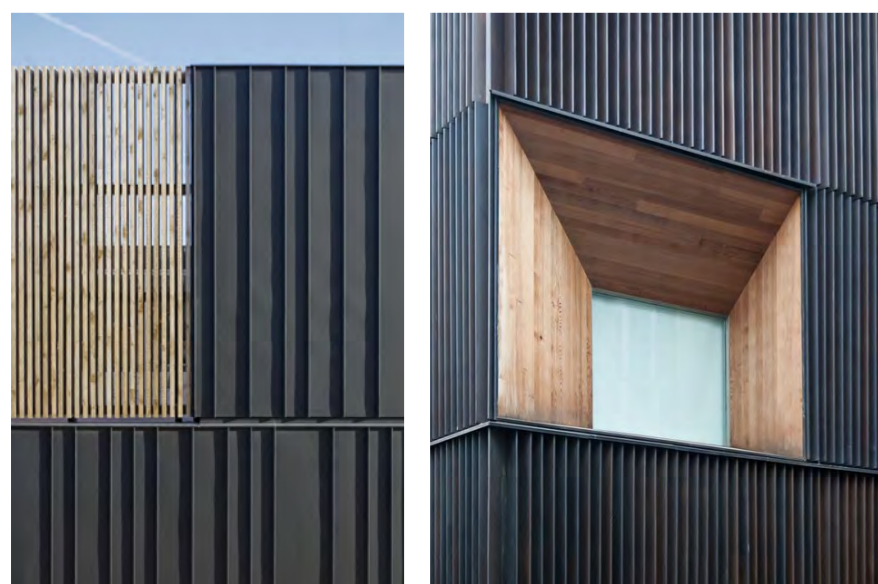
**Merge with landscape**  
The site for the campus has a very varied topography. Working with these different levels is a great opportunity to root the new campus into the landscape. By letting the campus follow these existing levels, we can add variety to the height and roofscape, and keep the scale appropriate. Considered landscaping suitable for the Hebridean climate can also help soften the edges of the new campus.



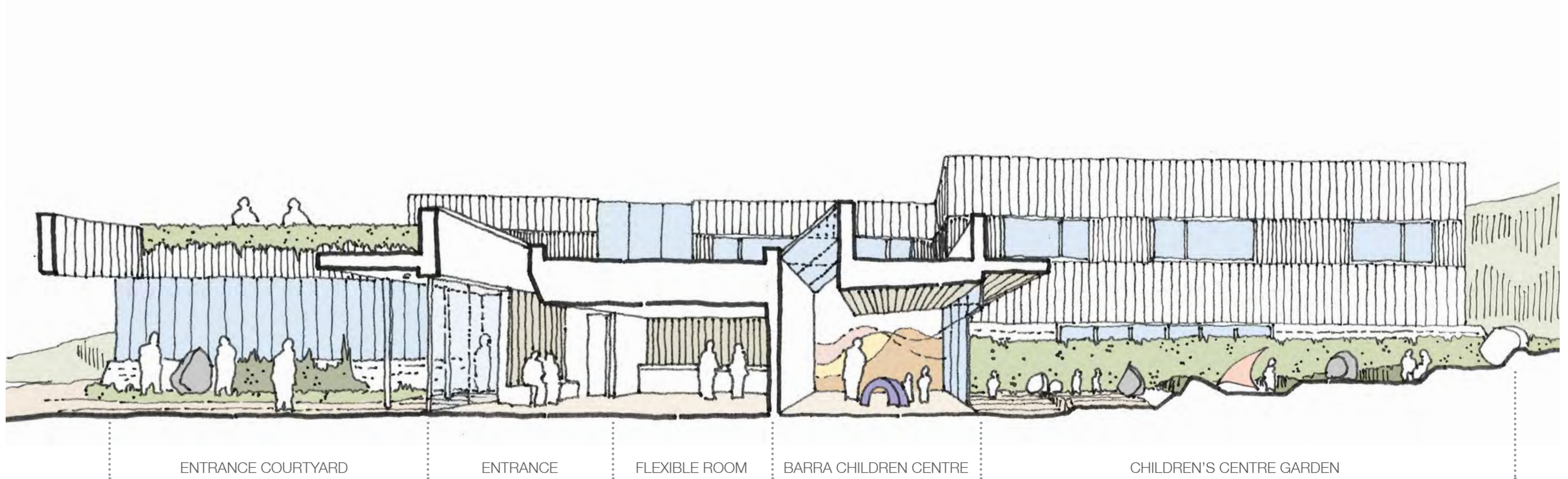
Barra and Vatersay Community Campus  
Consultation Boards



hebridean housing  
partnership



① View from South East



ENTRANCE COURTYARD

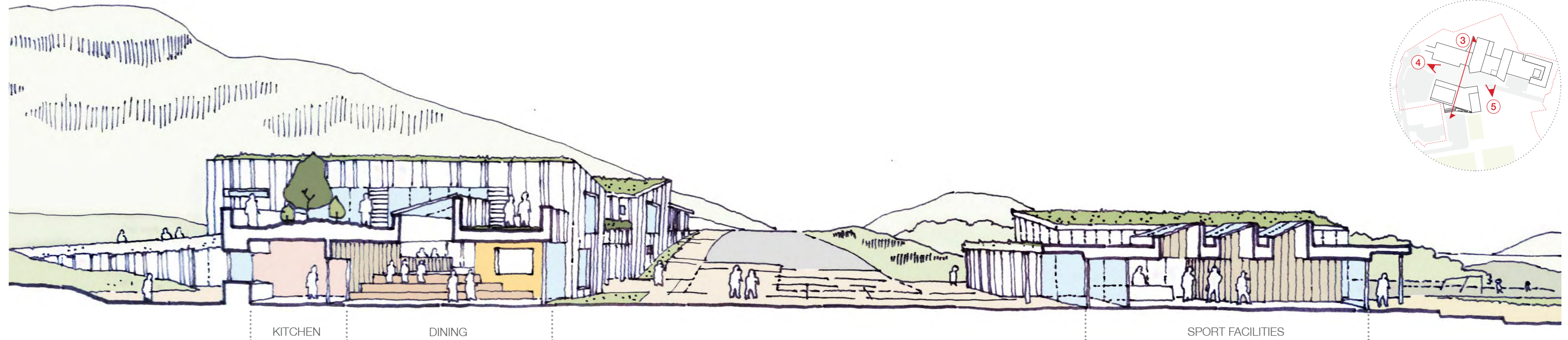
ENTRANCE

FLEXIBLE ROOM

BARRA CHILDREN CENTRE

CHILDREN'S CENTRE GARDEN

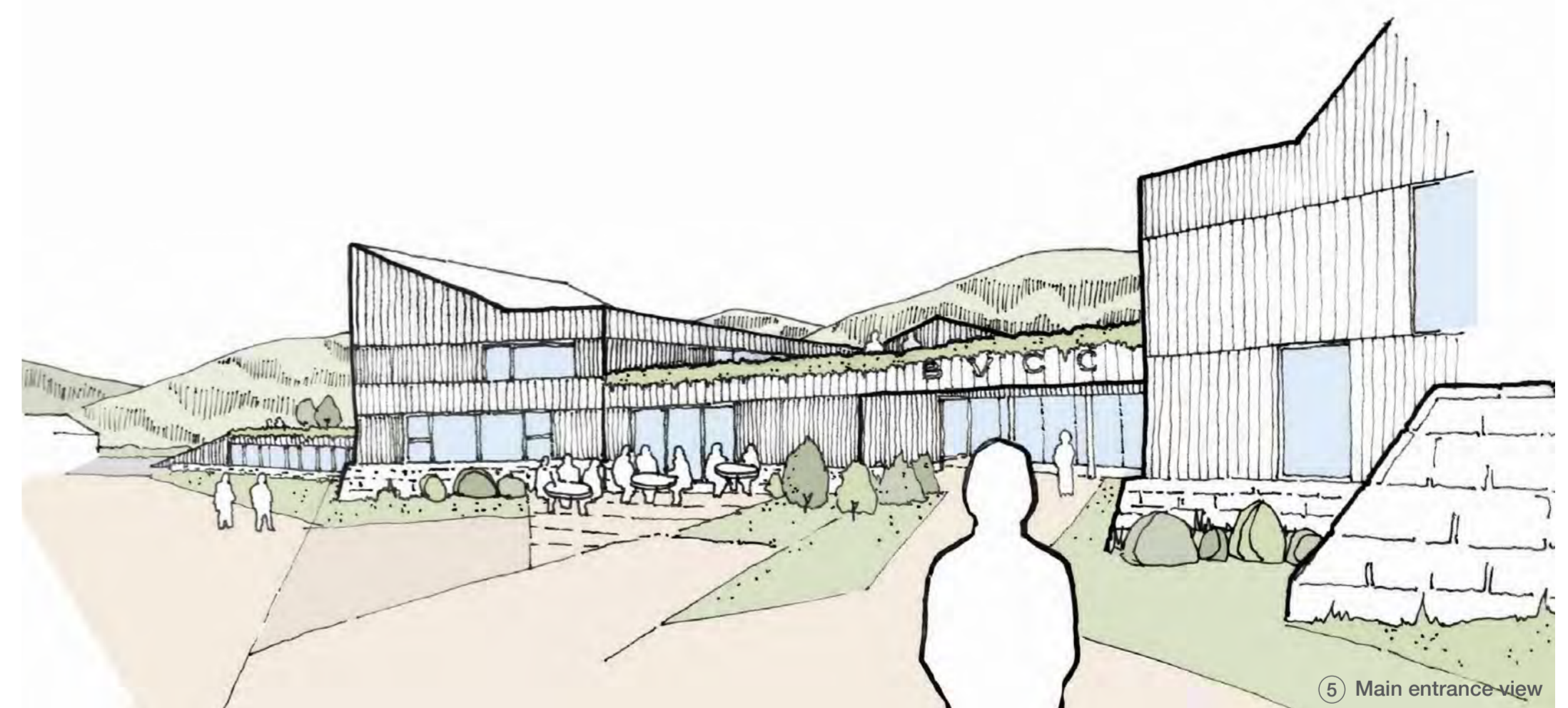
② Concept section through entrance courtyard and Barra Children's Centre



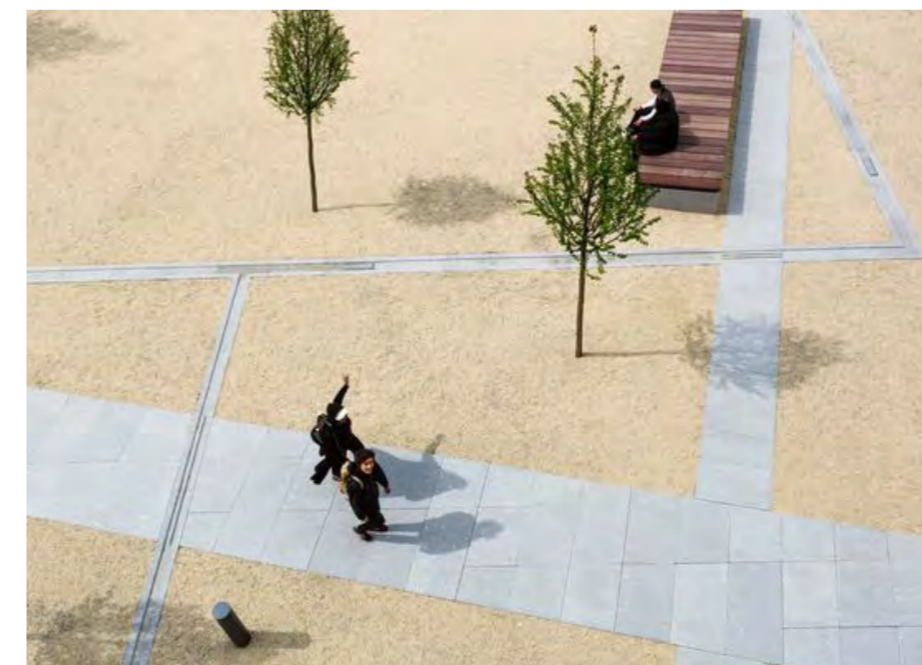
③ Concept section through A888 - dining area and sport facilities

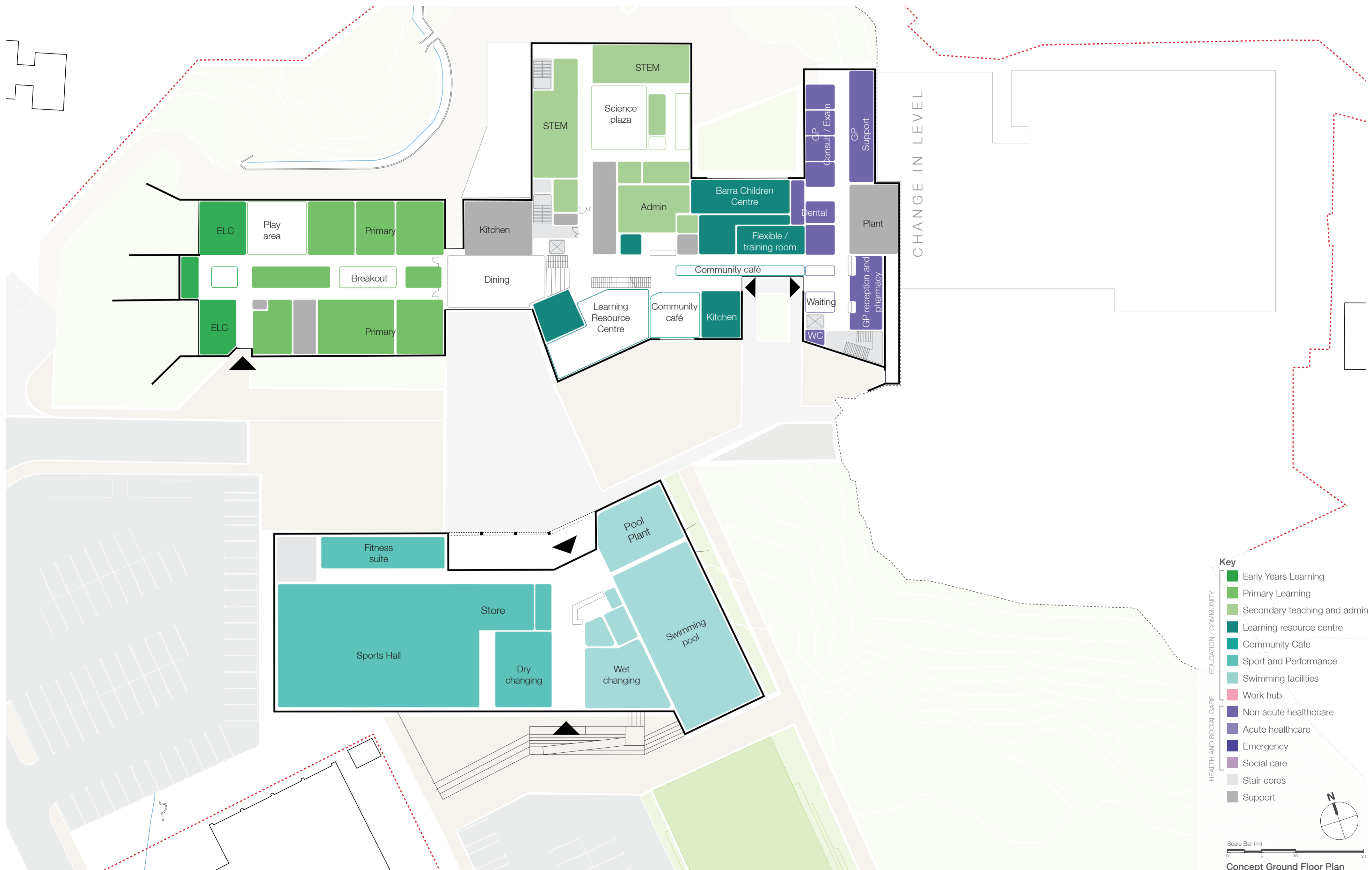


④ View from A888 - West

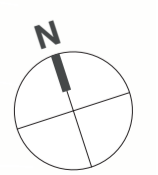


⑤ Main entrance view





- Key**
- Early Years Learning
  - Primary Learning
  - Secondary teaching and admin
  - Learning resource centre
  - Community Café
  - Sport and Performance
  - Swimming facilities
  - Work hub
  - Non acute healthcare
  - Acute healthcare
  - Emergency
  - Social care
  - Stair cores
  - Support



Concept Ground Floor Plan



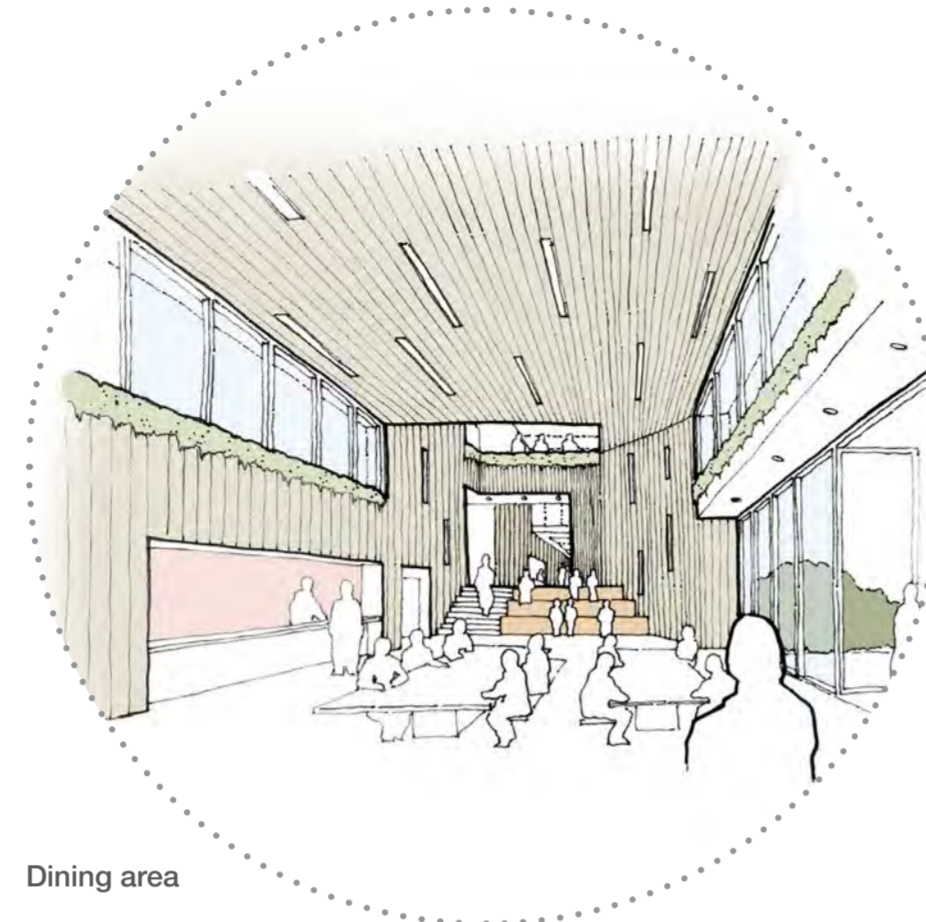
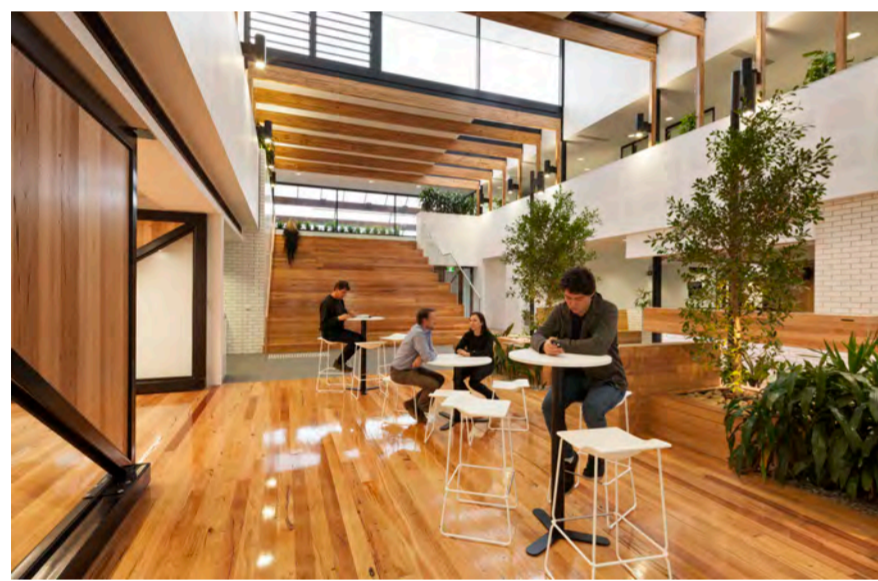
Scale Bar (m)  
0 5 10 20  
Concept Upper Ground Floor Plan



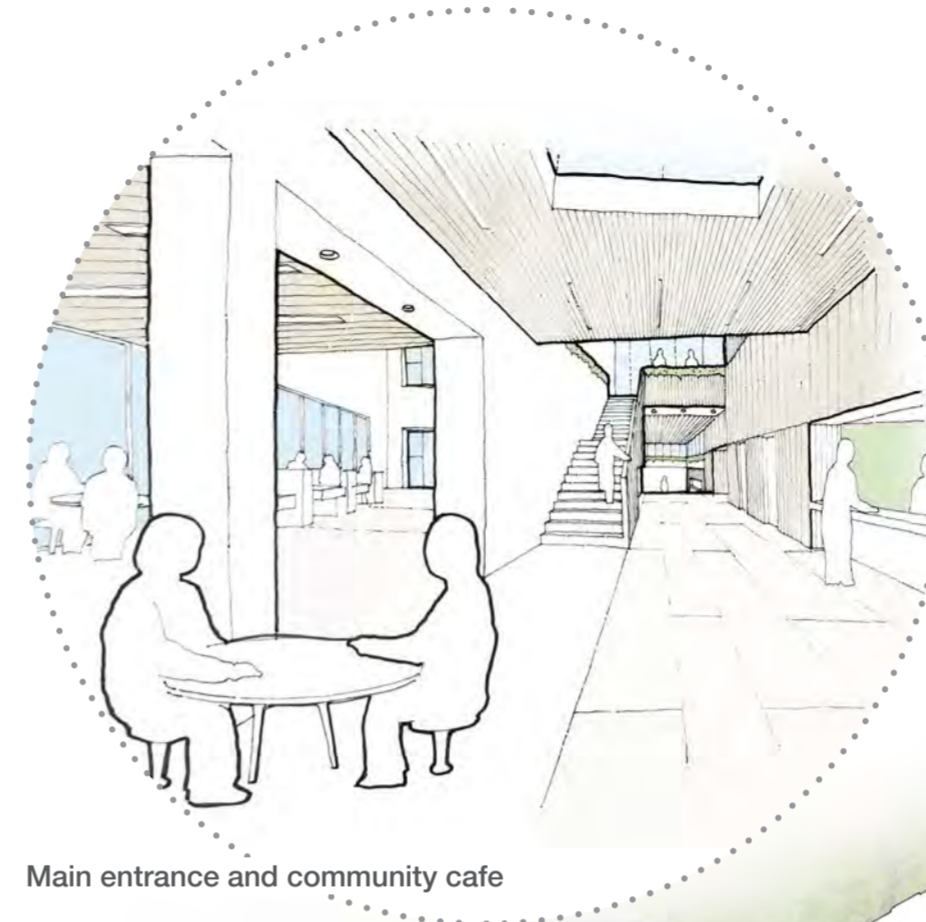
# Barra and Vatersay Community Campus Consultation Boards



hebridean housing  
partnership



Dining area



Main entrance and community cafe



Social care courtyard

