

## Accessing support out of hours

If you require help or advice outside of office hours (Monday-Friday, 9am-5pm), please contact NHS 24 Freephone 111.

In emergency or life threatening situations, where you require urgent medical attention, you should attend your local Emergency Department, or phone '999' for an ambulance.

## Useful Links

<b>NHSinform</b>	<a href="http://www.nhsinform.scot">www.nhsinform.scot</a>
<b>Patient.co.uk</b>	<a href="http://www.patient.co.uk">www.patient.co.uk</a>
<b>Parkinson's UK (Scotland)</b>	<a href="http://www.parkinsons.org.uk/about-us/our-work-scotland">www.parkinsons.org.uk/about-us/our-work-scotland</a>
<b>MS Society (Scotland)</b>	<a href="http://www.mssociety.org.uk">www.mssociety.org.uk</a>
<b>MS Trust</b>	<a href="http://mstrust.org.uk">mstrust.org.uk</a>
<b>Neuro Hebrides</b>	<a href="http://www.neurohebrides.org">www.neurohebrides.org</a>
<b>Power of Attorney</b>	<a href="http://mypowerofattorney.org.uk">mypowerofattorney.org.uk</a>
<b>Home Care</b>	<a href="http://www.wihb.scot.nhs.uk/our-services/home-care">www.wihb.scot.nhs.uk/our-services/home-care</a>

## Contact us

**Neurology Specialist Nursing Service**  
Stornoway Health Centre  
Springfield Road, Stornoway  
Isle of Lewis HS1 2PS

Tel. 01851 763301 or 0777 366 8080  
Email: [wi.neurology@nhs.scot](mailto:wi.neurology@nhs.scot)  
[www.wihb.scot.nhs.uk](http://www.wihb.scot.nhs.uk)

Please leave your phone number and name if leaving a message. If you have any problems with speech that may make this difficult, please ask somebody to phone for you.

The Neurology Specialist Nursing Service covers the Western Isles. Therefore, due to clinics and home visits, there may be a delay in replying to your message – but you will be contacted at the earliest convenience.

## We are listening - how did we do?



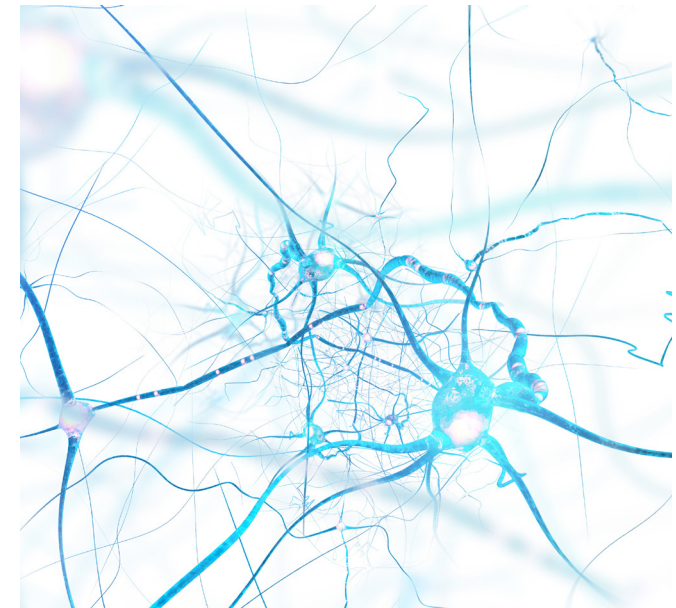
We welcome your feedback, as it helps us evaluate the services we provide. If you would like to tell us about your experience:

- speak to a member of staff
- visit our website [www.wihb.scot.nhs.uk](http://www.wihb.scot.nhs.uk) or share your story at: [www.careopinion.org.uk](http://www.careopinion.org.uk) or tel. 0800 122 31 35
- tel. 01851 704704 (ext 2236) Monday-Friday
- between 10am-4pm.



Bòrd SSN nan Eilean Siar  
NHS Western Isles

## Neurology Specialist Nursing Service



Information and advice on the Western Isles  
Neurology Specialist Nursing Service

## About us

The Neurology Specialist Nursing Service provides specialist nursing to those with neurological conditions.

Patients are referred to the service by their Consultant Neurologist, only once a **confirmed diagnosis** has been made.

We can also offer help and support to families and carers. A named carer can also contact the service, but only with consent from the patient.

## What we offer

People who have a long-term condition often stay well for longer if they feel that they are in the driving seat. This means giving you choices, so you can work together with professionals to manage your condition.

We will, in conjunction with NHS Greater Glasgow & Clyde:

- help you and your family to understand your diagnosis and what it will mean to your life.
- help you and your family learn about your condition and understand how to manage your symptoms.
- help you to maintain your independence for as long as possible.

- ensure that everyone who needs to know about your condition understands how it affects you.
- discuss care options with you and act as co-ordinator where several agencies will be involved in your care.
- help you with telemedicine consultations with a neurologist.

The service will work with you, and the people who care for you, to ensure that you receive the best care at the right time.

The type of help that will best suit you and your family and carers will vary, depending on the stage of your condition and what you and your family/ carers need and want.

As well as the Neurology Specialist Nursing Service, people with a neurological condition are also cared for by a team of people which can include a range of specialists.

This may include neurologists, your GP, community and hospital nurses, Physiotherapists, Occupational Therapists, Speech & Language Therapists, Dieticians, Pharmacists, Social Services, and members of community and voluntary organisations.

Your local Neurology Specialist Nursing Service is supported by the Neurology team at NHS Greater Glasgow and Clyde.

The Adult Neurology service at NHS Greater Glasgow and Clyde provides specialist assessment and treatment for neurological disorders.

Information about the institute and the team can be found at:  
[www.neurology-in-ggc.scot.nhs.uk](http://www.neurology-in-ggc.scot.nhs.uk)

## What happens during your patient review?

A bespoke care plan will be developed to meet your individual needs and will include:

- neurological review
- medication review
- benefits check
- Future Care Planning
- Patient Journal
- referral to support services
- signposting to information and advice to families and carers
- providing bespoke training to patients and family members, as appropriate.