

Further information and help

NHS24	Freephone 111
NHSinform	www.nhsinform.scot
Patient UK:	http://patient.info

Contact Details

For further information contact:

Sarah Mitchell
Dermatology Liaison Nurse
Outpatients Department
Western Isles Hospital
Tel: 01851 708215
E-mail: sarah.mitchell15@nhs.scot

Opening hours: Mon-Fri 9am-5pm

We are listening - how did we do?

We welcome your feedback, as it helps us evaluate the services we provide. If you would like to tell us about your experience:

- speak to a member of staff
- visit our website: www.wihb.scot.nhs.uk/feedback or share your story at: www.careopinion.org.uk or tel. 0800 1223135
- tel. 01851 704704 (ext 2236)
Monday-Friday between 10am-4pm.

Version: 4 Review Date: May 2027
Written by: Dermatology Specialist Nurse, Western Isles Hospital.

Disclaimer

The content of this leaflet is intended to augment, not replace, information provided by your clinician. It is not intended nor implied to be a substitute for professional medical advice. Reading this information does not create or replace a doctor-patient relationship or consultation. If required, please contact your doctor or other health care provider to assist you to interpret any of this information, or in applying the information to your individual needs.

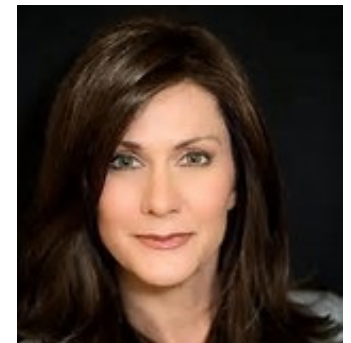
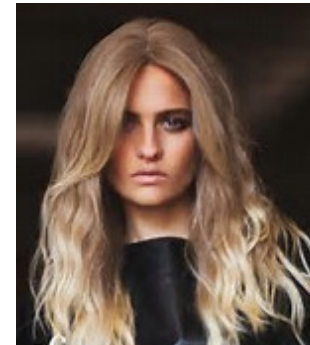
© NHS Western Isles, 2017, 2019, 2021, 2025.
All rights reserved.



Bòrd SSN nan Eilean Siar
NHS Western Isles

Outpatients Department

Wigs and Hairpieces



Information and advice from the Dermatology
Liaison Nurse Service in the Western Isles

This leaflet explains some of the ways in which the Dermatology Liaison Nurse can help you with wigs and hairpieces.

What do we offer?

You will receive an appointment to meet with the NHS Western Isles Dermatology Liaison Nurse.

During your appointment you will chat about what kind of wigs you would like. The Nurse can then arrange for a video call consultation with a stylist.

Each year, NHS Western Isles will provide free of charge:

4 x Modacrylic wigs

or

1 x Human hair wig

You have the choice to select the same wig style or you may want to have a different one for every occasion - the choice is yours.

Once you have chosen your wigs, the order will take 2-6 weeks to arrive depending upon stock availability.

If you would like to browse the wigs collection available before your appointment, please visit:

www.aderansuk.com

What is the difference between wigs?

Modacrylic wigs

Modacrylic wigs are pre-cut and styled and come in a very wide variety of styles and colours. They are made from artificial hair.

Human hair wigs

Human hair wigs come in a wide variety of colours and come in short, medium or long. They can then be cut by a local hairdresser to suit your personal taste.

We can also ask our suppliers to match the wig to your own hair colour

A few people require a bespoke wig to be made from a special mould taken of their head, but this only happens in exceptional circumstances.

When you receive your wigs

When they arrive, try them on to see how they look and feel. You might want to ask friends and family what they think.

Please note that you may need to try on quite a few before you find the wig that suits and feels right for you.

Like most internet shopping you have up to three weeks to decide whether you would like to keep the wigs or return them and choose something different.

Returning items/Payment

If you do decide to return the wigs please make sure that they still have their 'tags' attached and are in the correct box.

If you decide to return any items please contact the Dermatology Liaison Nurse who will either return items on your behalf or, if you choose to keep them, will arrange for their payment.

If you are unsure about anything please do not hesitate to contact the Dermatology Liaison Nurse.

Contact the Dermatology Liaison Nurse

Working hours:

Monday-Friday 9am-5pm

Telephone: 01851 708215

In the event that the Dermatology Liaison Nurse is unavailable, please telephone 01851 704704 and ask for the Outpatients Department.

Email: sarah.mitchell15@nhs.scot

You can refer yourself to the Dermatology Liaison Nurse Service using the above contact details.